

WILLOWS UNIFIED SCHOOL DISTRICT

AUDIT REPORT
JUNE 30, 2015

San Diego

Los Angeles

San Francisco
Bay Area

christy  white
A PROFESSIONAL
ACCOUNTANCY CORPORATION *associates*

**WILLOWS UNIFIED SCHOOL DISTRICT
OF GLENN COUNTY**

WILLOWS, CALIFORNIA

JUNE 30, 2015

The Willows Unified School District was established in 1966. There were no changes in the boundaries of the District during the current year. The District operates one elementary school, one intermediate school, one high school, and one continuation school.

GOVERNING BOARD

Member	Office	Term Expires
Jeromy Geiger	President	December 2016
Alex Parisio	Vice President	December 2018
Gina Taylor	Clerk	December 2018
Michelle Knight	Member	December 2018
James "Buck" Ward	Member	December 2016

DISTRICT ADMINISTRATORS

Dr. Mort Geivett
Superintendent

Debby Beymer
Director of Business Services

**WILLOWS UNIFIED SCHOOL DISTRICT
TABLE OF CONTENTS
FOR THE YEAR ENDED JUNE 30, 2015**

FINANCIAL SECTION

Independent Auditors' Report	1
Management's Discussion and Analysis.....	4
Basic Financial Statements	
Government-wide Financial Statements	
Statement of Net Position	11
Statement of Activities	12
Fund Financial Statements	
Governmental Funds – Balance Sheet.....	13
Reconciliation of the Governmental Funds Balance Sheet to the Statement of Net Position	14
Governmental Funds – Statement of Revenues, Expenditures, and Changes in Fund Balances.....	15
Reconciliation of the Governmental Funds Statement of Revenues, Expenditures, and Changes in Fund Balances to the Statement of Activities	16
Fiduciary Funds – Statement of Net Position.....	17
Fiduciary Funds – Statement of Changes in Net Position.....	18
Notes to Financial Statements	19

REQUIRED SUPPLEMENTARY INFORMATION

General Fund – Budgetary Comparison Schedule	50
Schedule of Funding Progress	51
Schedule of the District's Proportionate Share of the Net Pension Liability - CalSTRS	52
Schedule of the District's Proportionate Share of the Net Pension Liability - CalPERS.....	53
Schedule of District Contributions - CalSTRS	54
Schedule of District Contributions - CalPERS.....	55
Notes to Required Supplementary Information.....	56

SUPPLEMENTARY INFORMATION

Schedule of Expenditures of Federal Awards	58
Schedule of Average Daily Attendance (ADA).....	59
Schedule of Instructional Time.....	60
Schedule of Financial Trends and Analysis.....	61
Reconciliation of Annual Financial and Budget Report with Audited Financial Statements.....	62
Combining Statements – Non-Major Governmental Funds	
Combining Balance Sheet.....	63
Combining Statement of Revenues, Expenditures, and Changes in Fund Balances.....	64
Notes to Supplementary Information.....	65

**WILLOWS UNIFIED SCHOOL DISTRICT
TABLE OF CONTENTS
FOR THE YEAR ENDED JUNE 30, 2015**

OTHER INDEPENDENT AUDITORS' REPORTS

Report on Internal Control Over Financial Reporting and on Compliance and Other Matters Based on an Audit of Financial Statements Performed in Accordance with *Government Auditing Standards* 67
Report on Compliance For Each Major Federal Program; and Report on Internal Control Over Compliance Required by OMB Circular A-133 69
Report on State Compliance..... 71

SCHEDULE OF FINDINGS AND QUESTIONED COSTS

Summary of Auditors' Results 74
Financial Statement Findings..... 75
Federal Award Findings and Questioned Costs 76
State Award Findings and Questioned Costs..... 77
Summary Schedule of Prior Audit Findings 78

FINANCIAL SECTION

INDEPENDENT AUDITORS' REPORT

Governing Board
Willows Unified School District
Willows, California

Report on the Financial Statements

We have audited the accompanying financial statements of the governmental activities, the major fund, and the aggregate remaining fund information of the Willows Unified School District, as of and for the year ended June 30, 2015, and the related notes to the financial statements, which collectively comprise the Willows Unified School District's basic financial statements as listed in the table of contents.

Management's Responsibility for the Financial Statements

Management is responsible for the preparation and fair presentation of these financial statements in accordance with accounting principles generally accepted in the United States of America; this includes the design, implementation, and maintenance of internal control relevant to the preparation and fair presentation of financial statements that are free from material misstatement, whether due to fraud or error.

Auditor's Responsibility

Our responsibility is to express opinions on these financial statements based on our audit. We conducted our audit in accordance with auditing standards generally accepted in the United States of America and the standards applicable to financial audits contained in *Government Auditing Standards*, issued by the Comptroller General of the United States. Those standards require that we plan and perform the audit to obtain reasonable assurance about whether the financial statements are free from material misstatement.

An audit involves performing procedures to obtain audit evidence about the amounts and disclosures in the financial statements. The procedures selected depend on the auditor's judgment, including the assessment of the risks of material misstatement of the financial statements, whether due to fraud or error. In making those risk assessments, the auditor considers internal control relevant to the entity's preparation and fair presentation of the financial statements in order to design audit procedures that are appropriate in the circumstances, but not for the purpose of expressing an opinion on the effectiveness of the entity's internal control. Accordingly, we express no such opinion. An audit also includes evaluating the appropriateness of accounting policies used and the reasonableness of significant accounting estimates made by management, as well as evaluating the overall presentation of the financial statements.

Christy White, CPA

Michael Ash, CPA

Heather Rubio

SAN DIEGO
LOS ANGELES
SAN FRANCISCO/BAY AREA

Corporate Office:
348 Olive Street
San Diego, CA 92103

toll-free: 877.220.7229
tel: 619.270.8222
fax: 619.260.9085
www.christywhite.com

*Licensed by the California
State Board of Accountancy*

We believe that the audit evidence we have obtained is sufficient and appropriate to provide a basis for our audit opinions.

Opinions

In our opinion, the financial statements referred to above present fairly, in all material respects, the respective financial position of the governmental activities, the major fund, and the aggregate remaining fund information of Willows Unified School District, as of June 30, 2015, and the respective changes in financial position thereof for the year then ended in accordance with accounting principles generally accepted in the United States of America.

Emphasis of a Matter

As described in Note 1 to the financial statements, in 2015 Willows Unified School District adopted new accounting guidance, Governmental Accounting Standards Board Statement No. 68, *Accounting and Financial Reporting for Pensions*. Our opinion is not modified with respect to this matter.

Other Matters

Required Supplementary Information

Accounting principles generally accepted in the United States of America require that the required supplementary information, such as management's discussion and analysis, budgetary comparison information, schedule of funding progress for OPEB benefits, schedules of proportionate share of net pension liability, and schedules of District contributions for pensions be presented to supplement the basic financial statements. Such information, although not part of the basic financial statements, is required by the Governmental Accounting Standards Board who considers it to be an essential part of financial reporting for placing the basic financial statements in appropriate operational, economic, or historical context. We have applied certain limited procedures to the required supplementary information in accordance with auditing standards generally accepted in the United States of America, which consisted of inquiries of management about the methods of preparing the information and comparing the information for consistency with management's responses to our inquiries, the basic financial statements, and other knowledge we obtained during our audit of the basic financial statements. We do not express an opinion or provide any assurance on the information because the limited procedures do not provide us with sufficient evidence to express an opinion or provide any assurance.

Supplementary Information

Our audit was conducted for the purpose of forming opinions on the financial statements that collectively comprise the Willows Unified School District's basic financial statements. The supplementary information listed in the table of contents, including the schedule of expenditures of Federal awards, which is required by the U.S. Office of Management and Budget Circular A-133, *Audits of State, Local Governments, and Non-Profit Organizations*, is presented for purposes of additional analysis and is not a required part of the basic financial statements.

The supplementary information listed in the table of contents is the responsibility of management and was derived from and relates directly to the underlying accounting and other records used to prepare the basic financial statements. Such information has been subjected to the auditing procedures applied in the audit of the basic financial statements and certain additional procedures, including comparing and reconciling such information directly to the underlying accounting and other records used to prepare the basic financial statements or to the basic financial statements themselves, and other additional procedures in accordance with auditing standards generally accepted in the United States of America. In our opinion, the supplementary information is fairly stated, in all material respects, in relation to the basic financial statements as a whole.

Other Reporting Required by *Government Auditing Standards*

In accordance with *Government Auditing Standards*, we have also issued our report dated December 14, 2015 on our consideration of Willows Unified School District's internal control over financial reporting and on our tests of its compliance with certain provisions of laws, regulations, contracts, and grant agreements and other matters. The purpose of that report is to describe the scope of our testing of internal control over financial reporting and compliance and the results of that testing, and not to provide an opinion on internal control over financial reporting or on compliance. That report is an integral part of an audit performed in accordance with *Government Auditing Standards* in considering Willows Unified School District's internal control over financial reporting and compliance.

Christy White Associates

San Diego, California
December 14, 2015

**WILLOWS UNIFIED SCHOOL DISTRICT
MANAGEMENT'S DISCUSSION AND ANALYSIS**

INTRODUCTION

Our discussion and analysis of Willows Unified School District's (District) financial performance provides an overview of the District's financial activities for the fiscal year ended June 30, 2015. It should be read in conjunction with the District's financial statements, which follow this section.

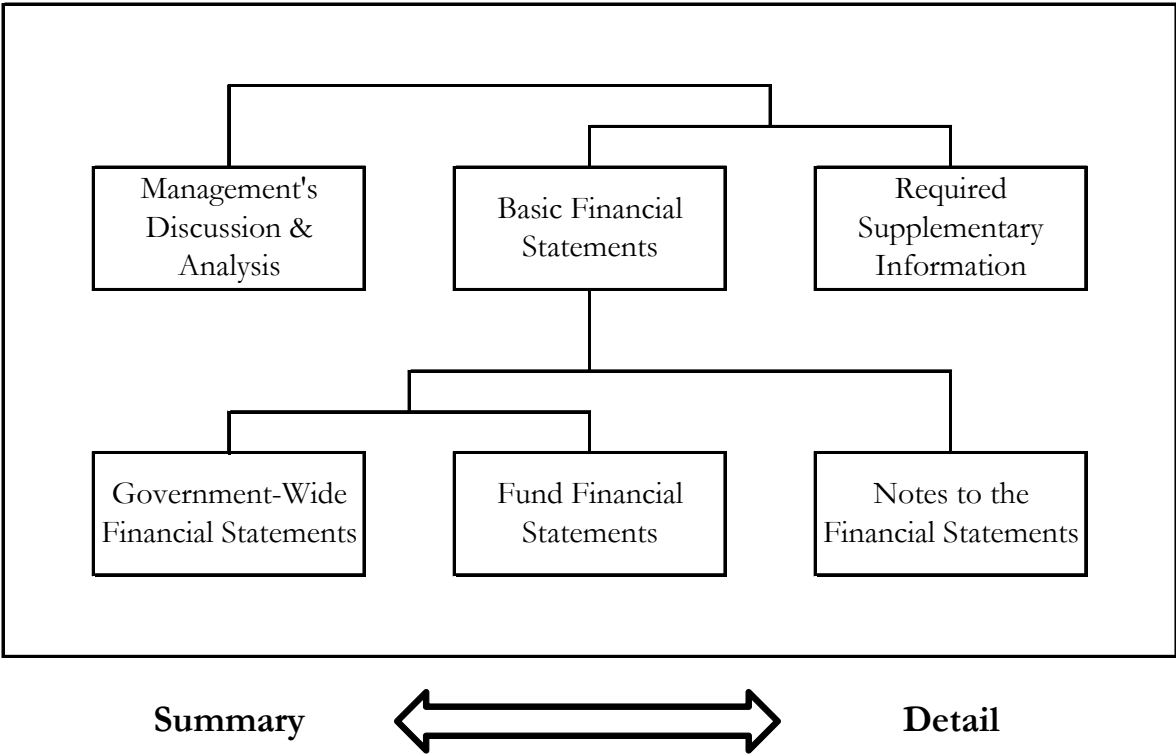
FINANCIAL HIGHLIGHTS

- ▶ Total net position was (\$2,810,603) at June 30, 2015. This was a decrease of \$10,210,209 from the prior year, before restatement.

- ▶ Overall revenues were \$13,849,894 which were exceeded by expenses of \$13,948,797.

OVERVIEW OF FINANCIAL STATEMENTS

Components of the Financials Section



**WILLOWS UNIFIED SCHOOL DISTRICT
MANAGEMENT'S DISCUSSION AND ANALYSIS, continued
FOR THE YEAR ENDED JUNE 30, 2015**

This annual report consists of three parts – Management's Discussion and Analysis (this section), the basic financial statements, and required supplementary information. The three sections together provide a comprehensive overview of the District. The basic financial statements are comprised of two kinds of statements that present financial information from different perspectives:

- ▶ **Government-wide financial statements**, which comprise the first two statements, provide both short-term and long-term information about the entity's overall financial position.

- ▶ **Fund financial statements** focus on reporting the individual parts of District operations in more detail. The fund financial statements comprise the remaining statements.
 - ▶ **Governmental Funds** provide a detailed *short-term* view that helps you determine whether there are more or fewer financial resources that can be spent in the near future to finance the District's programs.

 - ▶ **Fiduciary Funds** report balances for which the District is a custodian or *trustee* of the funds, such as Associated Student Bodies and pension funds.

The financial statements also include notes that explain some of the information in the statements and provide more detailed data. The basic financial statements are followed by a section of required and other supplementary information that further explain and support the financial statements.

Government-Wide Statements

The government-wide statements report information about the District as a whole using accounting methods similar to those used by private-sector companies. The statement of net position includes all of the government's assets and liabilities. All of the current year's revenues and expenses are accounted for in the statement of activities, regardless of when cash is received or paid.

The two government-wide statements report the District's net position and how it has changed. Net position is one way to measure the District's financial health or position. Over time, increases or decreases in the District's net position are an indicator of whether its financial health is improving or deteriorating, respectively.

The government-wide financial statements of the District include governmental activities. All of the District's basic services are included here, such as regular education, food service, maintenance and general administration. LCFF funding and federal and state grants finance most of these activities.

**WILLOWS UNIFIED SCHOOL DISTRICT
MANAGEMENT'S DISCUSSION AND ANALYSIS, continued
FOR THE YEAR ENDED JUNE 30, 2015**

FINANCIAL ANALYSIS OF THE ENTITY AS A WHOLE

Net Position

The District's net position was (\$2,810,603) at June 30, 2015, as reflected in the table below. Of this amount, (\$7,935,834) was unrestricted. Restricted net position is reported separately to show legal constraints from debt covenants and enabling legislation that limit the Governing Board's ability to use that net position for day-to-day operations.

	Governmental Activities		
	2015	2014	Net Change
ASSETS			
Current and other assets	\$ 5,936,355	\$ 6,046,481	\$ (110,126)
Capital assets	6,889,768	6,260,473	629,295
Total Assets	12,826,123	12,306,954	519,169
DEFERRED OUTFLOWS OF RESOURCES	728,384	-	728,384
LIABILITIES			
Current liabilities	1,424,044	739,319	684,725
Long-term liabilities	12,684,980	4,168,029	8,516,951
Total Liabilities	14,109,024	4,907,348	9,201,676
DEFERRED INFLOWS OF RESOURCES	2,256,086	-	2,256,086
NET POSITION			
Net investment in capital assets	2,939,768	2,305,473	634,295
Restricted	2,185,463	1,952,420	233,043
Unrestricted	(7,935,834)	3,141,713	(11,077,547)
Total Net Position	\$ (2,810,603)	\$ 7,399,606	\$ (10,210,209)

**WILLOWS UNIFIED SCHOOL DISTRICT
MANAGEMENT'S DISCUSSION AND ANALYSIS, continued
FOR THE YEAR ENDED JUNE 30, 2015**

FINANCIAL ANALYSIS OF THE ENTITY AS A WHOLE (continued)

Changes in Net Position

The results of this year's operations for the District as a whole are reported in the Statement of Activities. The table below takes the information from the Statement, rounds off the numbers, and rearranges them slightly, so you can see our total revenues, expenses, and special items for the year.

	Governmental Activities		
	2015	2014	Net Change
REVENUES			
Program revenues			
Charges for services	\$ 119,078	\$ 98,486	\$ 20,592
Operating grants and contributions	1,499,547	1,981,983	(482,436)
General revenues			
Property taxes	3,800,456	3,422,676	377,780
Unrestricted federal and state aid	7,544,448	6,822,812	721,636
Other	886,365	626,394	259,971
Total Revenues	13,849,894	12,952,351	897,543
EXPENSES			
Instruction	7,454,883	6,696,922	757,961
Instruction-related services	1,530,059	1,336,346	193,713
Pupil services	1,438,200	1,382,814	55,386
General administration	997,380	928,704	68,676
Plant services	1,507,409	2,011,916	(504,507)
Debt service	37,549	31,644	5,905
Other Outgo	983,317	840,553	142,764
Total Expenses	13,948,797	13,228,899	719,898
Change in net position	(98,903)	(276,548)	177,645
Net Position - Beginning, as Restated	(2,711,700)	7,676,154	(10,387,854)
Net Position - Ending	\$ (2,810,603)	\$ 7,399,606	\$ (10,210,209)

* Restatement to Beginning Net Position relates to both the 2015 year and the 2014 year

**WILLOWS UNIFIED SCHOOL DISTRICT
MANAGEMENT'S DISCUSSION AND ANALYSIS, continued
FOR THE YEAR ENDED JUNE 30, 2015**

FINANCIAL ANALYSIS OF THE ENTITY AS A WHOLE (continued)

Changes in Net Position (continued)

The total cost of all our governmental activities this year was \$13,948,797, while the net cost of services was only \$12,330,172 (refer to the table below). The amount that our taxpayers ultimately financed for these activities through taxes was only \$3,800,456 because the cost was paid by other governments and organizations who subsidized certain programs with grants and contributions.

	Net Cost of Services	
	2015	2014
Instruction	\$ 6,889,215	\$ 5,883,085
Instruction-related services	1,358,420	1,153,545
Pupil services	681,136	635,540
General administration	904,284	764,204
Plant services	1,476,251	1,839,859
Debt service	37,549	31,644
Transfers to other agencies	983,317	840,553
Total Expenses	\$ 12,330,172	\$ 11,148,430

FINANCIAL ANALYSIS OF THE DISTRICT'S MAJOR FUNDS

The financial performance of the District as a whole is reflected in its governmental funds as well. As the District completed this year, its governmental funds reported a combined fund balance of \$4,517,311, which is less than last year's ending fund balance of \$5,307,162. The District's General Fund had \$764,574 less in operating revenues than expenditures for the year ended June 30, 2015.

CURRENT YEAR BUDGET 2014-15

During the fiscal year, budget revisions and appropriation transfers are presented to the Board for their approval on a monthly basis to reflect changes to both revenues and expenditures that become known during the year. In addition, the Board of Education approves financial projections included with the Adopted Budget, First Interim, and Second Interim financial reports. The Unaudited Actuals reflect the District's financial projections and current budget based on State and local financial information.

**WILLOWS UNIFIED SCHOOL DISTRICT
MANAGEMENT'S DISCUSSION AND ANALYSIS, continued
FOR THE YEAR ENDED JUNE 30, 2015**

CAPITAL ASSET AND DEBT ADMINISTRATION

Capital Assets

By the end of 2014-15 the District had invested \$6,889,768 in capital assets, net of accumulated depreciation.

	Governmental Activities		
	2015	2014	Net Change
CAPITAL ASSETS			
Land	\$ 106,915	\$ 106,915	\$ -
Land improvements	4,262,380	4,063,380	199,000
Buildings & improvements	8,820,070	8,800,070	20,000
Furniture & equipment	2,636,852	1,874,733	762,119
Accumulated depreciation	(8,936,449)	(8,584,625)	(351,824)
Total Capital Assets	\$ 6,889,768	\$ 6,260,473	\$ 629,295

Long-Term Liabilities

At year-end, the District had \$12,684,980 in long-term liabilities, an increase of 204.7% from last year – as shown in the table below. (More detailed information about the District's long-term liabilities is presented in footnotes to the financial statements.)

	Governmental Activities		
	2015	2014	Net Change
LONG-TERM LIABILITIES			
Total qualified zone academy bonds	\$ 3,950,000	\$ 3,955,000	\$ (5,000)
Compensated absences	95,204	91,406	3,798
Net OPEB obligation	43,519	121,623	(78,104)
Net pension liability	8,601,257	-	8,601,257
Less: current portion of long-term debt	(5,000)	(5,000)	-
Total Long-term Liabilities	\$ 12,684,980	\$ 4,163,029	\$ 8,521,951

**WILLOWS UNIFIED SCHOOL DISTRICT
MANAGEMENT'S DISCUSSION AND ANALYSIS, continued
FOR THE YEAR ENDED JUNE 30, 2015**

ECONOMIC FACTORS AND NEXT YEAR'S BUDGET

At the time these financial statements were prepared and audited, the District was aware of several circumstances that could affect its future financial health.

Landmark legislation passed in Year 2013 reformed California school district finance by creating the Local Control Funding Formula (LCFF). The District continues to analyze the impact of the LCFF on funding for our program offerings and services. The LCFF is designed to provide a flexible funding mechanism that links student achievement to state funding levels. The LCFF provides a per pupil base grant amount, by grade span, that is augmented by supplemental funding for targeted student groups in low income brackets, those that are English language learners and foster youth. The State anticipates all school districts to reach the statewide targeted base funding levels by 2020-21 but the annual amount funded to meet the target is uncertain.

Factors related to LCFF that the District is monitoring include: (1) estimates of funding in the next budget year and beyond; (2) the Local Control and Accountability Plan (LCAP) that aims to link student accountability measurements to funding allocations; (3) ensuring the integrity of reporting student data through the California Longitudinal Pupil Achievement Data System (CALPADs); and, (4) meeting annual compliance and audit requirements.

The State's economy is expected to grow at a modest rate of about 2%-3% annually over the next two years with little chance of recession, according to the UCLA Anderson Economic Forecast for September 2015. The ability of the State to fund the LCFF and other programs is largely dependent on the strength of the State's economy and remains uncertain.

GASB 68, *Accounting and Financial Reporting for Pensions*, is effective in the 2014-15 fiscal year. The new standard requires the reporting of annual pension cost using an actuarially determined method and a net pension liability is expected to result. The District participates in state employee pension plans, PERS and STRS, and both are underfunded. The District's proportionate share of the liability is reported in the Statement of Net Position as of June 30, 2015. The amount of the liability is material to the financial position of the District. To address the underfunding issues, the pension plans intend to raise employer rates in future years, and the increased costs could be significant.

Enrollment can fluctuate due to factors such as population growth, competition from private, parochial, inter-district transfers in or out, economic conditions and housing values. Losses in enrollment will cause a school district to lose operating revenues without necessarily permitting the district to make adjustments in fixed operating costs.

All of these factors were considered in preparing the District's budget for the 2015-16 fiscal year.

CONTACTING THE DISTRICT'S FINANCIAL MANAGEMENT

This financial report is designed to provide our citizens, taxpayers, students, and investors and creditors with a general overview of the District's finances and to show the District's accountability for the money it receives. If you have questions about this report or need any additional financial information, contact the District Office: Willows Unified School District; 823 W. Laurel Street; Willows, CA 95988.

WILLOWS UNIFIED SCHOOL DISTRICT
STATEMENT OF NET POSITION
JUNE 30, 2015

	Governmental Activities
ASSETS	
Cash and cash equivalents	\$ 5,057,310
Accounts receivable	875,828
Inventory	3,217
Capital assets, not depreciated	106,915
Capital assets, net of accumulated depreciation	6,782,853
Total Assets	12,826,123
DEFERRED OUTFLOWS OF RESOURCES	
Deferred outflows related to pensions	728,384
Total Deferred Outflows of Resources	728,384
LIABILITIES	
Deficit cash	13,312
Accrued liabilities	1,375,871
Unearned revenue	29,861
Long-term liabilities, current portion	5,000
Long-term liabilities, non-current portion	12,684,980
Total Liabilities	14,109,024
DEFERRED INFLOWS OF RESOURCES	
Deferred inflows related to pensions	2,256,086
Total Deferred Inflows of Resources	2,256,086
NET POSITION	
Net investment in capital assets	2,939,768
Restricted:	
Capital projects	328,856
Educational programs	1,795,961
All others	60,646
Unrestricted	(7,935,834)
Total Net Position	\$ (2,810,603)

The accompanying notes are an integral part of these financial statements.

**WILLOWS UNIFIED SCHOOL DISTRICT
STATEMENT OF ACTIVITIES
FOR THE YEAR ENDED JUNE 30, 2015**

Function/Programs	Expenses	Program Revenues		Net (Expenses)
		Charges for Services	Operating Grants and Contributions	Revenues and Changes in Net Position
				Governmental Activities
GOVERNMENTAL ACTIVITIES				
Instruction	\$ 7,454,883	\$ -	\$ 565,668	\$ (6,889,215)
Instruction-related services				
Instructional supervision and administration	136,884	-	106,941	(29,943)
Instructional library, media, and technology	121,130	-	29,158	(91,972)
School site administration	1,272,045	-	35,540	(1,236,505)
Pupil services				
Home-to-school transportation	204,358	-	-	(204,358)
Food services	690,185	112,222	529,495	(48,468)
All other pupil services	543,657	-	115,347	(428,310)
General administration				
Centralized data processing	64,616	-	-	(64,616)
All other general administration	932,764	6,411	86,685	(839,668)
Plant services	1,507,409	445	30,713	(1,476,251)
Interest on long-term debt	37,549	-	-	(37,549)
Other Outgo	983,317	-	-	(983,317)
Total Governmental Activities	\$ 13,948,797	\$ 119,078	\$ 1,499,547	(12,330,172)
General revenues				
Taxes and subventions				
Property taxes, levied for general purposes				
Federal and state aid not restricted for specific purposes				
Interest and investment earnings				
Interagency revenues				
Miscellaneous				
Subtotal, General Revenue				
CHANGE IN NET POSITION				
Net Position - Beginning, as Restated				
Net Position - Ending				

The accompanying notes are an integral part of these financial statements.

WILLOWS UNIFIED SCHOOL DISTRICT
GOVERNMENTAL FUNDS
BALANCE SHEET
JUNE 30, 2015

	General Fund	Non-Major Governmental Funds	Total Governmental Funds
ASSETS			
Cash and cash equivalents	\$ 4,728,833	\$ 328,477	\$ 5,057,310
Accounts receivable	751,380	124,448	875,828
Due from other funds	34,365	-	34,365
Stores inventory	-	3,217	3,217
Total Assets	\$ 5,514,578	\$ 456,142	\$ 5,970,720
LIABILITIES			
Deficit cash	\$ -	\$ 13,312	\$ 13,312
Accrued liabilities	1,360,125	15,746	1,375,871
Due to other funds	-	34,365	34,365
Unearned revenue	29,861	-	29,861
Total Liabilities	1,389,986	63,423	1,453,409
FUND BALANCES			
Nonspendable	6,775	3,217	9,992
Restricted	1,795,961	389,502	2,185,463
Committed	276,547	-	276,547
Assigned	672,924	-	672,924
Unassigned	1,372,385	-	1,372,385
Total Fund Balances	4,124,592	392,719	4,517,311
Total Liabilities and Fund Balances	\$ 5,514,578	\$ 456,142	\$ 5,970,720

The accompanying notes are an integral part of these financial statements.

WILLOWS UNIFIED SCHOOL DISTRICT
RECONCILIATION OF THE GOVERNMENTAL FUNDS BALANCE SHEET TO THE STATEMENT
OF NET POSITION
JUNE 30, 2015

Total Fund Balance - Governmental Funds \$ 4,517,311

Amounts reported for assets and liabilities for governmental activities in the statement of net position are different from amounts reported in governmental funds because:

Capital assets:

In governmental funds, only current assets are reported. In the statement of net position, all assets are reported, including capital assets and accumulated depreciation:

Capital assets	\$ 15,826,217	
Accumulated depreciation	<u>(8,936,449)</u>	6,889,768

Long-term liabilities:

In governmental funds, only current liabilities are reported. In the statement of net position, all liabilities, including long-term liabilities, are reported. Long-term liabilities relating to governmental activities consist of:

Total qualified zone academy bonds	\$ 3,950,000	
Compensated absences	95,204	
Net OPEB obligation	43,519	
Net pension liability	<u>8,601,257</u>	(12,689,980)

Deferred outflows and inflows of resources relating to pensions:

In governmental funds, deferred outflows and inflows of resources relating to pensions are not reported because they are applicable to future periods. In the statement of net position, deferred outflows and inflows of resources relating to pensions are reported.

Deferred outflows of resources related to pensions	\$ 728,384	
Deferred inflows of resources related to pensions	<u>(2,256,086)</u>	(1,527,702)

Total Net Position - Governmental Activities \$ (2,810,603)

**WILLOWS UNIFIED SCHOOL DISTRICT
GOVERNMENTAL FUNDS
STATEMENT OF REVENUES, EXPENDITURES, AND CHANGES IN FUND BALANCES
FOR THE YEAR ENDED JUNE 30, 2015**

	General Fund	Non-Major Governmental Funds	Total Governmental Funds
REVENUES			
LCFF sources	\$ 10,607,958	\$ -	\$ 10,607,958
Federal sources	738,205	548,044	1,286,249
Other state sources	884,951	41,964	926,915
Other local sources	827,195	133,116	960,311
Total Revenues	13,058,309	723,124	13,781,433
EXPENDITURES			
Current			
Instruction	7,307,740	-	7,307,740
Instruction-related services			
Instructional supervision and administration	133,917	-	133,917
Instructional library, media, and technology	118,732	-	118,732
School site administration	1,267,827	-	1,267,827
Pupil services			
Home-to-school transportation	179,833	-	179,833
Food services	-	711,175	711,175
All other pupil services	584,189	-	584,189
General administration			
Centralized data processing	63,255	-	63,255
All other general administration	874,227	34,365	908,592
Plant services	1,209,397	2,386	1,211,783
Facilities acquisition and maintenance	1,057,900	475	1,058,375
Transfers to other agencies	983,317	-	983,317
Debt service			
Principal	5,000	-	5,000
Interest and other	37,549	-	37,549
Total Expenditures	13,822,883	748,401	14,571,284
Excess (Deficiency) of Revenues			
Over Expenditures	(764,574)	(25,277)	(789,851)
Other Financing Sources (Uses)			
Transfers in	53,744	-	53,744
Transfers out	-	(53,744)	(53,744)
Net Financing Sources (Uses)	53,744	(53,744)	-
NET CHANGE IN FUND BALANCE			
	(710,830)	(79,021)	(789,851)
Fund Balance - Beginning	4,835,422	471,740	5,307,162
Fund Balance - Ending	\$ 4,124,592	\$ 392,719	\$ 4,517,311

The accompanying notes are an integral part of these financial statements.

**WILLOWS UNIFIED SCHOOL DISTRICT
RECONCILIATION OF THE GOVERNMENTAL FUNDS STATEMENT OF REVENUES,
EXPENDITURES, AND CHANGES IN FUND BALANCES TO THE STATEMENT OF ACTIVITIES
FOR THE YEAR ENDED JUNE 30, 2015**

Net Change in Fund Balances - Governmental Funds \$ (789,851)

Amounts reported for governmental activities in the statement of activities are different from amounts reported in governmental funds because:

Capital outlay:

In governmental funds, the costs of capital assets are reported as expenditures in the period when the assets are acquired. In the statement of activities, costs of capital assets are allocated over their estimated useful lives as depreciation expense. The difference between capital outlay expenditures and depreciation expense for the period is:

Expenditures for capital outlay:	\$ 1,098,077	
Depreciation expense:	(468,782)	629,295

Debt service:

In governmental funds, repayments of long-term debt are reported as expenditures. In the government-wide statements, repayments of long-term debt are reported as reductions of liabilities. Expenditures for repayment of the principal portion of long-term debt were:

5,000

Compensated absences:

In governmental funds, compensated absences are measured by the amounts paid during the period. In the statement of activities, compensated absences are measured by the amount earned. The difference between compensated absences paid and compensated absences earned, was:

(3,798)

Postemployment benefits other than pensions (OPEB):

In governmental funds, OPEB costs are recognized when employer contributions are made. In the statement of activities, OPEB costs are recognized on the accrual basis. This year, the difference between OPEB costs and actual employer contributions was:

78,104

Pensions:

In governmental funds, pension costs are recognized when employer contributions are made, in the government-wide statement of activities, pension costs are recognized on the accrual basis. This year, the difference between accrual-basis pension costs and employer contributions was:

(17,653)

Change in Net Position of Governmental Activities \$ (98,903)

The accompanying notes are an integral part of these financial statements.

WILLOWS UNIFIED SCHOOL DISTRICT
FIDUCIARY FUNDS
STATEMENT OF NET POSITION
JUNE 30, 2015

	<u>Trust Funds</u>	<u>Agency Funds</u>
	<u>Private-Purpose</u>	<u>Student Body</u>
	<u>Trust Fund</u>	<u>Fund</u>
ASSETS		
Cash and cash equivalents	\$ 124,549	\$ 129,765
Accounts receivable	151	-
Stores inventory	-	5,425
Total Assets	<u>124,700</u>	<u>\$ 135,190</u>
LIABILITIES		
Due to student groups	-	\$ 135,190
Total Liabilities	<u>-</u>	<u>\$ 135,190</u>
NET POSITION		
Unrestricted	124,700	
Total Net Position	<u>\$ 124,700</u>	

The accompanying notes are an integral part of these financial statements.

WILLOWS UNIFIED SCHOOL DISTRICT
FIDUCIARY FUNDS
STATEMENT OF CHANGES IN NET POSITION
FOR THE YEAR ENDED JUNE 30, 2015

	<u>Trust Funds</u> <u>Private-Purpose</u> <u>Trust Fund</u>
ADDITIONS	
Investment earnings	\$ 340
Total Additions	<u>340</u>
DEDUCTIONS	
Other trust activities	<u>27,000</u>
Total Deductions	<u>27,000</u>
CHANGE IN NET POSITION	(26,660)
Net Position - Beginning	<u>151,360</u>
Net Position - Ending	<u>\$ 124,700</u>

The accompanying notes are an integral part of these financial statements.

NOTE 1 – SUMMARY OF SIGNIFICANT ACCOUNTING POLICIES

A. Financial Reporting Entity

The Willows Unified School District (the “District”) accounts for its financial transactions in accordance with the policies and procedures of the Department of Education’s *California School Accounting Manual*. The accounting policies of the District conform to generally accepted accounting principles as prescribed by the Governmental Accounting Standards Board (GASB) and the American Institute of Certified Public Accountants (AICPA).

The District operates under a locally elected Board form of government and provides educational services to grades K-12 as mandated by the state. A reporting entity is comprised of the primary government, component units, and other organizations that are included to ensure the financial statements are not misleading. The primary government of the District consists of all funds, departments and agencies that are not legally separate from the District. For the District, this includes general operations, food service, and student-related activities.

B. Component Units

Component units are legally separate organizations for which the District is financially accountable. Component units may also include organizations that are fiscally dependent on the District in that the District approves their budget, the issuance of their debt or the levying of their taxes. In addition, component units are other legally separate organizations for which the District is not financially accountable but the nature and significance of the organization’s relationship with the District is such that exclusion would cause the District’s financial statements to be misleading or incomplete. The District has no such component units.

C. Basis of Presentation

Government-Wide Statements. The statement of net position and the statement of activities display information about the primary government (the District). These statements include the financial activities of the overall government, except for fiduciary activities. Eliminations have been made to minimize the double-counting of internal activities. Governmental activities generally are financed through taxes, intergovernmental revenue, and other non-exchange transactions.

The statement of activities presents a comparison between direct expenses and program revenue for each function of the District’s governmental activities. Direct expenses are those that are specifically associated with a program or function and, therefore, are clearly identifiable to a particular function. Indirect expense allocations that have been made in the funds have been reserved for the statement of activities. Program revenues include charges paid by the recipients of the goods or services offered by the programs and grants and contributions that are restricted to meeting of operational or capital requirements of a particular program. Revenues that are not classified as program revenues are presented as general revenues. The comparison of program revenues and expenses identifies the extent to which each program or business segment is self-financing or draws from the general revenues of the District.

WILLOWS UNIFIED SCHOOL DISTRICT
NOTES TO FINANCIAL STATEMENTS, *continued*
JUNE 30, 2015

NOTE 1 – SUMMARY OF SIGNIFICANT ACCOUNTING POLICIES (*continued*)

C. Basis of Presentation (*continued*)

Fund Financial Statements. The fund financial statements provide information about the District's funds, including its fiduciary funds. Separate statements for each fund category – governmental and fiduciary – are presented. The emphasis of fund financial statements is on major governmental funds, each displayed in a separate column. All remaining governmental funds are aggregated and reported as non-major funds.

Governmental funds are used to account for activities that are governmental in nature. Governmental activities are typically tax-supported and include education of pupils, operation of food service and child development programs, construction and maintenance of school facilities, and repayment of long-term debt.

Fiduciary funds are used to account for assets held by the District in a trustee or agency capacity for others that cannot be used to support the District's own programs.

Major Governmental Funds

General Fund: The General Fund is the main operating fund of the District. It is used to account for all activities except those that are required to be accounted for in another fund. In keeping with the minimum number of funds principle, all of the District's activities are reported in the General Fund unless there is a compelling reason to account for an activity in another fund. A District may have only one General Fund.

Non-Major Governmental Funds

Special Revenue Funds: Special revenue funds are used to account for and report the proceeds of specific revenue sources that are restricted or committed to expenditures for specified purposes other than debt service or capital projects. The District maintains the following special revenue funds:

Cafeteria Special Revenue Fund: This fund is used to account separately for federal, state, and local resources to operate the food service program (*Education Code Sections 38090–38093*). The Cafeteria Special Revenue Fund shall be used only for those expenditures authorized by the governing board as necessary for the operation of the District's food service program (*Education Code Sections 38091 and 38100*).

Capital Project Funds: Capital project funds are established to account for financial resources to be used for the acquisition or construction of major capital facilities (other than those financed by proprietary funds and trust funds).

Capital Facilities Fund: This fund is used primarily to account separately for moneys received from fees levied on developers or other agencies as a condition of approving a development (*Education Code Sections 17620–17626*). The authority for these levies may be county/city ordinances (*Government Code Sections 65970–65981*) or private agreements between the District and the developer. Interest earned in the Capital Facilities Fund is restricted to that fund (*Government Code Section 66006*).

NOTE 1 – SUMMARY OF SIGNIFICANT ACCOUNTING POLICIES (*continued*)

C. Basis of Presentation (*continued*)

Fiduciary Funds

Trust and Agency Funds: Trust and agency funds are used to account for assets held in a trustee or agent capacity for others that cannot be used to support the District's own programs. The key distinction between trust and agency funds is that trust funds are subject to a trust agreement that affects the degree of management involvement and the length of time that the resources are held.

Foundation Private-Purpose Trust Fund: This fund is used to account separately for gifts or bequests per *Education Code Section 41031* that benefit individuals, private organizations, or other governments and under which neither principal nor income may be used for purposes that support the District's own programs.

Student Body Fund: The Student Body Fund is an agency fund and, therefore, consists only of accounts such as cash and balancing liability accounts, such as due to student groups. The student body itself maintains its own general fund, which accounts for the transactions of that entity in raising and expending money to promote the general welfare, morale, and educational experiences of the student body (*Education Code Sections 48930–48938*).

D. Basis of Accounting – Measurement Focus

Government-Wide and Fiduciary Financial Statements

The government-wide and fiduciary fund financial statements are reported using the economic resources measurement focus. The government-wide and fiduciary fund financial statements are reported using the accrual basis of accounting. Revenues are recorded when earned and expenses are recorded at the time liabilities are incurred, regardless of when the related cash flows take place.

Net Position equals assets and deferred outflows of resources minus liabilities and deferred inflows of resources. Net investment in capital assets consists of capital assets, net of accumulated depreciation, reduced by the outstanding balances of any borrowings used for the acquisition, construction or improvement of those assets. The net position should be reported as restricted when constraints placed on its use are either externally imposed by creditors (such as through debt covenants), grantors, contributors, or laws or regulations of other governments or imposed by law through constitutional provisions or enabling legislation. The net position restricted for other activities results from special revenue funds and the restrictions on their use.

Governmental Funds

Basis of accounting refers to when revenues and expenditures are recognized in the accounts and reported in the financial statements. Governmental funds use the modified accrual basis of accounting.

NOTE 1 – SUMMARY OF SIGNIFICANT ACCOUNTING POLICIES (continued)

D. Basis of Accounting – Measurement Focus (continued)

Revenues – Exchange and Non-Exchange Transactions

Revenue resulting from exchange transactions, in which each party gives and receives essentially equal value, is recorded under the accrual basis when the exchange takes place. On a modified accrual basis, revenue is recorded in the fiscal year in which the resources are measurable and become available. "Available" means the resources will be collected within the current fiscal year or are expected to be collected soon enough thereafter to be used to pay liabilities of the current fiscal year. Generally, "available" means collectible within the current period or within 60 days after year-end. However, to achieve comparability of reporting among California school districts and so as not to distort normal revenue patterns, with specific respect to reimbursements grants and corrections to State-aid apportionments, the California Department of Education has defined available for school districts as collectible within one year.

Non-exchange transactions, in which the District receives value without directly giving equal value in return, include property taxes, grants, and entitlements. Under the accrual basis, revenue from property taxes is recognized in the fiscal year for which the taxes are levied. Revenue from the grants and entitlements is recognized in the fiscal year in which all eligibility requirements have been satisfied.

Eligibility requirements include timing requirements, which specify the year when the resources are to be used or the fiscal year when use is first permitted; matching requirements, in which the District must provide local resources to be used for a specific purpose; and expenditure requirements, in which the resources are provided to the District on a reimbursement basis. Under the modified accrual basis, revenue from non-exchange transactions must also be available before it can be recognized.

Unearned Revenue

Unearned revenue arises when potential revenue does not meet both the "measurable" and "available" criteria for recognition in the current period or when resources are received by the District prior to the incurrence of qualifying expenditures. In subsequent periods, when both revenue recognition criteria are met, or when the District has a legal claim to the resources, the liability for unearned revenue is removed from the balance sheet and revenue is recognized.

Certain grants received that have not met eligibility requirements are recorded as unearned revenue. On the governmental fund financial statements, receivables that will not be collected within the available period are also recorded as unearned revenue.

Expenses/Expenditures

On the accrual basis of accounting, expenses are recognized at the time a liability is incurred. On the modified accrual basis of accounting, expenditures are generally recognized in the accounting period in which the related fund liability is incurred, as under the accrual basis of accounting. However, under the modified accrual basis of accounting, debt service expenditures, as well as expenditures related to compensated absences and claims and judgments, are recorded only when payment is due. Allocations of cost, such as depreciation and amortization, are not recognized in the governmental funds. When both restricted and unrestricted resources are available for use, it is the District's policy to use restricted resources first, then unrestricted resources as they are needed.

NOTE 1 – SUMMARY OF SIGNIFICANT ACCOUNTING POLICIES (continued)

E. Assets, Deferred Outflows of Resources, Liabilities, Deferred Inflows of Resources, Fund Balance and Net Position

Cash and Cash Equivalents

The District’s cash and cash equivalents consist of cash on hand, demand deposits and short-term investments with original maturities of three months or less from the date of acquisition. Cash held in the county treasury is recorded at cost, which approximates fair value.

Investments

Investments with original maturities greater than one year are stated at fair value. Fair value is estimated based on quoted market prices at year-end. All investments not required to be reported at fair value are stated at cost or amortized cost. Fair values of investments in county and State investment pools are determined by the program sponsor.

Inventories

Inventories are valued at cost using average cost method. The costs of governmental fund-type inventories are recorded as expenditures when consumed rather than when purchased.

Capital Assets

The accounting and reporting treatment applied to the capital assets associated with a fund is determined by its measurement focus. Capital assets are reported in the governmental activities column of the government-wide statement of net position, but are not reported in the fund financial statements.

Capital assets are capitalized at cost (or estimated historical cost) and updated for additions and retirements during the year. Donated fixed assets are recorded at their fair market values as of the date received. The District maintains a capitalization threshold of \$5,000. The District does not own any infrastructure as defined in GASB Statement No. 34. Improvements are capitalized; the costs of normal maintenance and repairs that do not add to the value of the asset or materially extend an asset’s life are not capitalized. All reported capital assets, except for land and construction in progress, are depreciated. Improvements are depreciated over the remaining useful lives of the related capital assets. Depreciation is computed using the straight-line method over the following estimated useful lives:

<u>Asset Class</u>	<u>Estimated Useful Life</u>
Land Improvements	10 – 50 years
Buildings & Improvements	25 – 50 years
Furniture & Equipment	5 – 50 years

Interfund Balances

On fund financial statements, receivables and payables resulting from short-term interfund loans are classified as "Due from other funds/Due to other funds." These amounts are eliminated in the governmental activities columns of the statement of net position.

NOTE 1 – SUMMARY OF SIGNIFICANT ACCOUNTING POLICIES (*continued*)

E. Assets, Deferred Outflows of Resources, Liabilities, Deferred Inflows of Resources, Fund Balance and Net Position (*continued*)

Compensated Absences

Accumulated unpaid employee vacation benefits are accrued as a liability as the benefits are earned. The entire compensated absence liability is reported on the government-wide financial statements. For governmental funds, the current portion of unpaid compensated absences is recognized upon the occurrence of relevant events such as employee resignations and retirements that occur prior to year-end that have not yet been paid with expendable available financial resource. These amounts are recorded in the fund from which the employees who have accumulated leave are paid.

Accumulated sick leave benefits are not recognized as liabilities of the District. The District's policy is to record sick leave as an operating expense in the period taken because such benefits do not vest, nor is payment probable; however, unused sick leave is added to the creditable service period for calculation of retirement benefits when the employee retires.

Accrued Liabilities and Long-Term Obligations

All payables, accrued liabilities, and long-term obligations are reported in the government-wide financial statements. In general, governmental fund payables and accrued liabilities that, once incurred, are paid in a timely manner and in full from current financial resources are reported as obligations of the funds.

Premiums and Discounts

In the government-wide financial statements, long-term obligations are reported as liabilities in the statement of net position. Bond premiums and discounts are deferred and amortized over the life of the bonds using the straight line method.

Deferred Outflows/Deferred Inflows of Resources

In addition to assets, the District will sometimes report a separate section for deferred outflows of resources. This separate financial statement element, deferred outflows of resources, represents a consumption of net position that applies to a future period and so will not be recognized as an outflow of resources (expense/expenditure) until then.

In addition to liabilities, the District will sometimes report a separate section for deferred inflows of resources. This separate financial statement element, deferred inflows of resources, represents an acquisition of net position that applies to a future period and so will not be recognized as an inflow of resources (revenue) until that time.

Pensions

For purposes of measuring the net pension liability, deferred outflows of resources and deferred inflows of resources related to pensions, and pension expense, information about the fiduciary net position of the defined benefit pension plans (the Plans) of the California State Teachers' Retirement System (CalSTRS) and the California Public Employees' Retirement System (CalPERS) and additions to/deductions from the Plans' fiduciary net position have been determined on the same basis as they are reported by the Plans. For this purpose, benefit payments (including refunds of employee contributions) are recognized when due and payable in accordance with the benefit terms. Investments are reported at fair value.

NOTE 1 – SUMMARY OF SIGNIFICANT ACCOUNTING POLICIES (*continued*)

E. Assets, Deferred Outflows of Resources, Liabilities, Deferred Inflows of Resources, Fund Balance and Net Position (*continued*)

Fund Balance

Fund balance is divided into five classifications based primarily on the extent to which the District is bound to observe constraints imposed upon the use of the resources in the governmental funds. The classifications are as follows:

Nonspendable - The nonspendable fund balance classification reflects amounts that are not in spendable form. Examples include inventory, prepaid items, the long-term portion of loans receivable, and nonfinancial assets held for resale. This classification also reflects amounts that are in spendable form but that are legally or contractually required to remain intact, such as the principal of a permanent endowment.

Restricted - The restricted fund balance classification reflects amounts subject to externally imposed and legally enforceable constraints. Such constraints may be imposed by creditors, grantors, contributors, or laws or regulations of other governments, or may be imposed by law through constitutional provisions or enabling legislation.

Committed - The committed fund balance classification reflects amounts subject to internal constraints self-imposed by formal action of the Governing Board. The constraints giving rise to committed fund balance must be imposed no later than the end of the reporting period. The actual amounts may be determined subsequent to that date but prior to the issuance of the financial statements. In contrast to restricted fund balance, committed fund balance may be redirected by the government to other purposes as long as the original constraints are removed or modified in the same manner in which they were imposed, that is, by the same formal action of the Governing Board.

Assigned - The assigned fund balance classification reflects amounts that the government *intends* to be used for specific purposes. Assignments may be established either by the Governing Board or by a designee of the governing body, and are subject to neither the restricted nor committed levels of constraint. In contrast to the constraints giving rise to committed fund balance, constraints giving rise to assigned fund balance are not required to be imposed, modified, or removed by formal action of the Governing Board. The action does not require the same level of formality and may be delegated to another body or official. Additionally, the assignment need not be made before the end of the reporting period, but rather may be made any time prior to the issuance of the financial statements.

Unassigned - In the General Fund only, the unassigned fund balance classification reflects the residual balance that has not been assigned to other funds and that is not restricted, committed, or assigned to specific purposes. However, deficits in any fund, including the General Fund that cannot be eliminated by reducing or eliminating amounts assigned to other purposes are reported as negative unassigned fund balance.

The District applies restricted resources first when expenditures are incurred for purposes for which either restricted or unrestricted (committed, assigned and unassigned) amounts are available. Similarly, within unrestricted fund balance, committed amounts are reduced first followed by assigned, and then unassigned amounts when expenditures are incurred for purposes for which amounts in any of the unrestricted fund balance classifications could be used.

WILLOWS UNIFIED SCHOOL DISTRICT
NOTES TO FINANCIAL STATEMENTS, continued
JUNE 30, 2015

NOTE 1 – SUMMARY OF SIGNIFICANT ACCOUNTING POLICIES (continued)

F. Interfund Activity

Exchange transactions between funds are reported as revenues in the seller funds and as expenditures/expenses in the purchaser funds. Flows of cash or goods from one fund to another without a requirement for repayment are reported as interfund transfers. Interfund transfers are reported as other financing sources/uses in governmental funds. Repayments from funds responsible for particular expenditures/expenses to the funds that initially paid for them are not presented in the financial statements. Interfund transfers are eliminated in the governmental activities columns of the statement of activities.

G. Estimates

The preparation of the financial statements in conformity with accounting principles generally accepted in the United States of America requires management to make estimates and assumptions that affect the amounts reported in the financial statements and accompanying notes. Actual results may differ from those estimates.

H. Budgetary Data

The budgetary process is prescribed by provisions of the California Education Code and requires the governing board to hold a public hearing and adopt an operating budget no later than July 1 of each year. The District governing board satisfied these requirements. The adopted budget is subject to amendment throughout the year to give consideration to unanticipated revenue and expenditures primarily resulting from events unknown at the time of budget adoption with the legal restriction that expenditures cannot exceed appropriations by major object account.

The amounts reported as the original budgeted amounts in the budgetary statements reflect the amounts when the original appropriations were adopted. The amounts reported as the final budgeted amounts in the budgetary statements reflect the amounts after all budget amendments have been accounted for. For purposes of the budget, on-behalf payments have not been included as revenue and expenditures as required under generally accepted accounting principles.

I. Property Tax

Secured property taxes attach as an enforceable lien on property as of January 1. Taxes are payable in two installments on November 1 and February 1 and become delinquent on December 10 and April 10, respectively. Unsecured property taxes are payable in one installment on or before August 31. The County Auditor-Controller bills and collects the taxes on behalf of the District. Local property tax revenues are recorded when received.

WILLOWS UNIFIED SCHOOL DISTRICT
NOTES TO FINANCIAL STATEMENTS, continued
JUNE 30, 2015

NOTE 1 – SUMMARY OF SIGNIFICANT ACCOUNTING POLICIES (continued)

J. New Accounting Pronouncements

GASB Statement No. 68 – In June 2012, GASB issued Statement No. 68, *Accounting and Financial Reporting for Pensions—an amendment of GASB Statement No. 27*. The primary objective of this Statement is to improve accounting and financial reporting by state and local governments for pensions. It also improves information provided by state and local governmental employers about financial support for pensions that is provided by other entities. This Statement results from a comprehensive review of the effectiveness of existing standards of accounting and financial reporting for pensions with regard to providing decision-useful information, supporting assessments of accountability and interperiod equity, and creating additional transparency. The Statement is effective for periods beginning after June 15, 2014. The District has implemented GASB Statement No. 68 for the year ended June 30, 2015.

GASB Statement No. 71 – In November 2013, GASB issued Statement No. 71, *Pension Transition for Contributions Made Subsequent to the Measurement Date – an amendment of GASB Statement No. 68*. This standard seeks to clarify certain implementation issues related to amounts that are deferred and amortized at the time GASB 68 is first adopted. It applies to situations in which the measurement date of an actuarial valuation differs from the government's fiscal year. The Statement is effective for periods beginning after June 15, 2014. The District has implemented GASB Statement No. 71 for the year ended June 30, 2015.

GASB Statement No. 72 – In February 2015, GASB issued Statement No. 72, *Fair Value Measurement and Application*. This standard addresses accounting and financial reporting issues related to fair value measurements. The Statement is effective for periods beginning after June 15, 2015. The District has not yet determined the impact on the financial statements.

GASB Statement No. 73 – In June 2015, GASB issued Statement No. 73, *Accounting and Financial Reporting for Pensions and Related Assets That are Not within the Scope of GASB Statement 68, and Amendments to Certain Provisions of GASB Statements 67 and 68*. This standard establishes requirements for defined benefit pensions that are not within the scope of GASB Statement 68 and amends certain provisions of GASB Statements 67 and 68. The Statement is effective for periods beginning after June 15, 2016. The District has not yet determined the impact on the financial statements.

GASB Statement No. 75 – In June 2015, GASB issued Statement No. 75, *Accounting and Financial Reporting for Postemployment Benefits Other Than Pensions*. This standard's primary objective is to improve accounting and financial reporting by state and local governments for postemployment benefits other than pensions. The Statement is effective for periods beginning after June 15, 2017. The District has not yet determined the impact on the financial statements.

WILLOWS UNIFIED SCHOOL DISTRICT
 NOTES TO FINANCIAL STATEMENTS, continued
 JUNE 30, 2015

NOTE 2 – CASH AND INVESTMENTS

A. Summary of Cash and Investments

	<u>Governmental Funds</u>	<u>Fiduciary Funds</u>
Cash in county	\$ 5,048,041	\$ 124,549
Cash on hand and in banks	4,994	129,765
Cash in revolving fund	4,275	-
Total cash and cash equivalents	<u>\$ 5,057,310</u>	<u>\$ 254,314</u>

B. Policies and Practices

The District is authorized under California Government Code to make direct investments in local agency bonds, notes, or warrants within the state; U.S. Treasury instruments; registered state warrants or treasury notes; securities of the U.S. Government, or its agencies; bankers acceptances; commercial paper; certificates of deposit placed with commercial banks and/or savings and loan companies; repurchase or reverse repurchase agreements; medium term corporate notes; shares of beneficial interest issued by diversified management companies, certificates of participation, obligations with first priority security; collateralized mortgage obligations; and the County Investment Pool.

Investment in County Treasury – The District maintains substantially all of its cash in the County Treasury in accordance with *Education Code Section 41001*. The Glenn County Treasurer’s pooled investments are managed by the County Treasurer who reports on a monthly basis to the board of supervisors. In addition, the function of the County Treasury Oversight Committee is to review and monitor the County’s investment policy. The committee membership includes the Treasurer and Tax Collector, the Auditor-Controller, Chief Administrative Officer, Superintendent of Schools Representative, and a public member. The fair value of the District’s investment in the pool is based upon the District’s pro-rata share of the fair value provided by the County Treasurer for the entire portfolio (in relation to the amortized cost of that portfolio). The balance available for withdrawal is based on the accounting records maintained by the County Treasurer, which is recorded on the amortized cost basis.

WILLOWS UNIFIED SCHOOL DISTRICT
NOTES TO FINANCIAL STATEMENTS, continued
JUNE 30, 2015

NOTE 2 – CASH AND INVESTMENTS (continued)

C. General Authorizations

Except for investments by trustees of debt proceeds, the authority to invest District funds deposited with the county treasury is delegated to the County Treasurer and Tax Collector. Additional information about the investment policy of the County Treasurer and Tax Collector may be obtained from its website. The table below identifies the investment types permitted by California Government Code.

Authorized Investment Type	Maximum Remaining Maturity	Maximum Percentage of Portfolio	Maximum Investment in One Issuer
Local Agency Bonds, Notes, Warrants	5 years	None	None
Registered State Bonds, Notes, Warrants	5 years	None	None
U. S. Treasury Obligations	5 years	None	None
U. S. Agency Securities	5 years	None	None
Banker’s Acceptance	180 days	40%	30%
Commercial Paper	270 days	25%	10%
Negotiable Certificates of Deposit	5 years	30%	None
Repurchase Agreements	1 year	None	None
Reverse Repurchase Agreements	92 days	20% of base	None
Medium-Term Corporate Notes	5 years	30%	None
Mutual Funds	N/A	20%	10%
Money Market Mutual Funds	N/A	20%	10%
Mortgage Pass-Through Securities	5 years	20%	None
County Pooled Investment Funds	N/A	None	None
Local Agency Investment Fund (LAIF)	N/A	None	None
Joint Powers Authority Pools	N/A	None	None

D. Interest Rate Risk

Interest rate risk is the risk that changes in market interest rates will adversely affect the fair value of an investment. Generally, the longer the maturity of an investment, the greater the sensitivity of its fair value to changes in market interest rates. The District manages its exposure to interest rate risk by investing in the County Treasury. The District maintains a pooled investment with the County Treasury with an amortized book value of \$5,172,590 which approximates fair value.

WILLOWS UNIFIED SCHOOL DISTRICT
NOTES TO FINANCIAL STATEMENTS, continued
JUNE 30, 2015

NOTE 2 – CASH AND INVESTMENTS (continued)

E. Credit Risk

Credit risk is the risk that an issuer of an investment will not fulfill its obligation to the holder of the investment. This is measured by the assignment of a rating by a nationally recognized statistical rating organization. The investments in the County Treasury are not required to be rated. As of June 30, 2015, the pooled investments in the County Treasury were not rated.

F. Custodial Credit Risk – Deposits

This is the risk that in the event of a bank failure, the District's deposits may not be returned to it. The District does not have a policy for custodial credit risk for deposits. However, the California Government Code requires that a financial institution secure deposits made by state or local governmental units by pledging securities in an undivided collateral pool held by a depository regulated under state law. The market value of the pledged securities in the collateral pool must equal at least 110 percent of the total amount deposited by the public agencies. California law also allows financial institutions to secure public deposits by pledging first trust deed mortgage notes having a value of 150 percent of the secured public deposits and letters of credit issued by the Federal Home Loan Bank of San Francisco having a value of 105 percent of the secured deposits. As of June 30, 2015, the District's bank balance was not exposed to custodial credit risk.

NOTE 3 – ACCOUNTS RECEIVABLE

Accounts receivable at June 30, 2015 consisted of the following:

	General Fund	Non-Major Governmental Funds	Total Governmental Activities	Total Fiduciary
Federal Government				
Categorical aid	\$ 118,220	\$ 65,230	\$ 183,450	\$ -
State Government				
Apportionment	107,871	-	107,871	-
Categorical aid	538	9,170	9,708	-
Lottery	122,521	-	122,521	-
Local Government				
Other local sources	402,230	50,048	452,278	151
Total	\$ 751,380	\$ 124,448	\$ 875,828	\$ 151

WILLOWS UNIFIED SCHOOL DISTRICT
NOTES TO FINANCIAL STATEMENTS, continued
JUNE 30, 2015

NOTE 4 – CAPITAL ASSETS

Capital asset activity for the year ended June 30, 2015 was as follows:

	Balance			Balance
	July 01, 2014	Additions	Deletions	June 30, 2015
Governmental Activities				
Capital assets not being depreciated				
Land	\$ 106,915	\$ -	\$ -	\$ 106,915
Total Capital Assets not Being Depreciated	106,915	-	-	106,915
Capital assets being depreciated				
Land improvements	4,063,380	199,000	-	4,262,380
Buildings & improvements	8,800,070	20,000	-	8,820,070
Furniture & equipment	1,874,733	879,077	116,958	2,636,852
Total Capital Assets Being Depreciated	14,738,183	1,098,077	116,958	15,719,302
Less Accumulated Depreciation				
Land improvements	796,687	184,179	-	980,866
Buildings & improvements	6,264,423	180,457	-	6,444,880
Furniture & equipment	1,523,515	104,146	116,958	1,510,703
Total Accumulated Depreciation	8,584,625	468,782	116,958	8,936,449
Governmental Activities				
Capital Assets, net	\$ 6,260,473	\$ 629,295	\$ -	\$ 6,889,768

Depreciation expense was allocated to governmental activities as follows:

Governmental Activities	
Instruction	\$ 145,668
Instructional supervision and administration	633
Instructional library, media, and technology	4,334
Home-to-school transportation	27,030
Food services	2,997
All other pupil services	3,786
Centralized data processing	1,361
All other general administration	32,323
Plant services	250,650
Total depreciation expense	<u>\$ 468,782</u>

WILLOWS UNIFIED SCHOOL DISTRICT
NOTES TO FINANCIAL STATEMENTS, continued
JUNE 30, 2015

NOTE 5 – INTERFUND TRANSACTIONS

A. Interfund Receivables/Payables (Due From/Due To)

Individual interfund receivable and payable balances at June 30, 2015 consisted of the Non-Major Cafeteria Fund owing the General Fund \$34,365 for indirect costs.

B. Operating Transfers

Interfund transfers for the year ended June 30, 2015 consisted of the Non-Major Cafeteria Fund transferring \$53,744 to the General Fund for reimbursement of expenditures.

NOTE 6 – ACCRUED LIABILITIES

Accrued liabilities at June 30, 2015 consisted of the following:

	General Fund	Non-Major Governmental Funds	Total Governmental Activities
Payroll	\$ 647,300	\$ -	\$ 647,300
Vendors payable	712,825	15,746	728,571
Total	\$ 1,360,125	\$ 15,746	\$ 1,375,871

NOTE 7 – UNEARNED REVENUE

Unearned revenue at June 30, 2015, consisted of \$29,861 related to Federal sources in the General Fund.

WILLOWS UNIFIED SCHOOL DISTRICT
NOTES TO FINANCIAL STATEMENTS, continued
JUNE 30, 2015

NOTE 8 – LONG-TERM DEBT

A schedule of changes in long-term debt for the year ended June 30, 2015 consisted of the following:

	Restated Balance			Balance June 30, 2015	Balance Due In One Year
	July 01, 2014	Additions	Deductions		
Governmental Activities					
Qualified zone academy bonds	\$ 3,955,000	\$ -	\$ 5,000	\$ 3,950,000	\$ 5,000
Compensated absences	91,406	3,798	-	95,204	-
Net OPEB obligation	121,623	-	78,104	43,519	-
Net pension liability	10,710,812	-	2,109,555	8,601,257	-
Total	\$ 14,878,841	\$ 3,798	\$ 2,192,659	\$ 12,689,980	\$ 5,000

- Payments for qualified zone academy bonds are made in the General Fund.
- Payments for compensated absences are typically liquidated in the General Fund and the Non-Major Governmental Funds.

A. Qualified Zone Academy Bonds

On August 15, 2013, the District entered into a lease agreement with Public Property Financing Corporation of California under a Qualified Zone Academy Bond (QZAB) to provide financing in the maximum amount of \$3,955,000 for an educational program of the District, which consists of comprehensive lighting retrofit along with power generation including electrical distribution upgrades, and as funds permit, general building rehabilitation and repairs at Murdock Elementary School, Willows Intermediate School, and Willows High School. Semi-annual payments are to be made each June 16 and December 16, commencing December 16, 2013 and continuing through December 16, 2030. The interest rate is stated at 0.95% per year. The QZAB has payments as follows:

<u>Year Ended June 30,</u>	<u>Principal</u>	<u>Interest</u>	<u>Total</u>
2016	\$ 5,000	\$ 37,501	\$ 42,501
2017	245,951	36,309	282,260
2018	248,288	33,962	282,250
2019	250,647	31,592	282,239
2020	253,028	29,199	282,227
2021 - 2025	1,301,655	109,306	1,410,961
2026 - 2030	1,364,669	53,808	1,418,477
2031	280,762	1,334	282,096
Total	\$ 3,950,000	\$ 333,011	\$ 4,283,011

WILLOWS UNIFIED SCHOOL DISTRICT
NOTES TO FINANCIAL STATEMENTS, continued
JUNE 30, 2015

NOTE 8 – LONG-TERM DEBT (continued)

B. Compensated Absences

Total unpaid employee compensated absences as of June 30, 2015 amounted to \$95,204. This amount is included as part of long-term liabilities in the government-wide financial statements.

C. Other Postemployment Benefits

The District follows GASB Statement No. 45, *Accounting and Financial Reporting by Employers for Postemployment Benefits Other Than Pensions*. The District's annual required contribution (ARC) for the year ended June 30, 2015 was \$537,788 with net interest and other adjustments of (\$2,168) for a net annual OPEB cost of \$535,620. The contributions made by the District during the year were \$613,724 (including the implicit rate subsidy), which resulted in a decrease to net OPEB obligation of \$78,104. At June 30, 2015, the ending balance was \$43,519. See Note 10 for additional information regarding the OPEB obligation and the postemployment benefit plan.

D. Net Pension Liability

The District follows GASB Statement No. 68, *Accounting and Financial Reporting for Pensions—an amendment of GASB Statement No. 27*. The District's restated beginning net pension liability was \$10,710,812 and decreased by \$2,109,555 during the year ended June 30, 2015. The ending net pension liability at June 30, 2015 was \$8,601,257. See Note 11 for additional information regarding the net pension liability.

WILLOWS UNIFIED SCHOOL DISTRICT
NOTES TO FINANCIAL STATEMENTS, continued
JUNE 30, 2015

NOTE 9 – FUND BALANCES

Fund balances were composed of the following elements at June 30, 2015:

	General Fund	Non-Major Governmental Funds	Total Governmental Funds
Non-spendable			
Revolving cash	\$ 4,275	\$ -	\$ 4,275
Stores inventory	-	3,217	3,217
All others	2,500	-	2,500
Total non-spendable	6,775	3,217	9,992
Restricted			
Educational programs	1,795,961	-	1,795,961
Capital projects	-	328,856	328,856
All others	-	60,646	60,646
Total restricted	1,795,961	389,502	2,185,463
Committed			
Other commitments	276,547	-	276,547
Total committed	276,547	-	276,547
Assigned			
Classified vacation accrual	95,204	-	95,204
WUTA PAR carryover	12,555	-	12,555
WUTA MAA carryover	11,507	-	11,507
Transfer to facility repair account	500,000	-	500,000
Lottery EFPB	53,658	-	53,658
Total assigned	672,924	-	672,924
Unassigned			
Reserve for economic uncertainties	859,173	-	859,173
Remaining unassigned	513,212	-	513,212
Total unassigned	1,372,385	-	1,372,385
Total	\$ 4,124,592	\$ 392,719	\$ 4,517,311

The District is committed to maintaining a prudent level of financial resources to protect against the need to reduce service levels because of temporary revenue shortfalls or unpredicted expenditures. The District's Minimum Fund Balance Policy requires a Reserve for Economic Uncertainties, consisting of unassigned amounts, equal to no less than three percent of General Fund expenditures and other financing uses.

NOTE 10 – POSTEMPLOYMENT BENEFITS OTHER THAN PENSIONS (OPEB)

A. Plan Description and Contribution Information

The District provides postemployment medical, dental, and vision benefits to all certificated employees and spouses who retire on or after attaining the age of 55, but not after age 65, with at least 15 consecutive years of service if employed by the District prior to June 30, 1992, and with at least 15 consecutive years of service if on salary step 16 or above in Class V if employed by the District on or after June 30, 1992. The District also provides postemployment health care benefits to all classified employees and spouses who retire on or after attaining the age of 55 with at least 20 years of service to the District, but not after age 65, unless they commenced their employment prior to January 1, 1995, in which case they are eligible for lifetime benefits. The District also provides postemployment health care benefits to all confidential/management employees and spouses who retire on or after attaining the age of 55 with at least 16 years of service to the District, but not after age 65, unless they commenced their employment prior to January 1, 1995, in which case they are eligible for lifetime benefits.

The District provides these benefits through their retiree health program, a single-employer defined benefit health care plan administered by the District. As of the July 1, 2014 actuary study, 47 met these eligibility requirements and an estimated 102 participants will be eligible in future years.

B. Funding Policy

The contribution requirements of Plan members and the District are established and may be amended by the District and District's bargaining units. The required contribution is based on projected pay-as-you-go financing requirements. For fiscal year 2015, the District contributed \$613,724 (including the implicit rate subsidy) to the Plan, all of which was used for current premiums.

As of June 30, 2015, the District has not established a plan or equivalent that contains an irrevocable transfer of assets dedicated to providing benefits to retirees in accordance with the terms of the plan and that are legally protected from creditors.

WILLOWS UNIFIED SCHOOL DISTRICT
NOTES TO FINANCIAL STATEMENTS, continued
JUNE 30, 2015

NOTE 10 – POSTEMPLOYMENT BENEFITS OTHER THAN PENSIONS (OPEB) (continued)

C. Annual OPEB Cost and Net OPEB Obligation

The District’s annual OPEB cost (expense) is calculated based on the annual required contribution of the employer (ARC), an amount actuarially determined in accordance with the parameters of GASB Statement No. 45. The ARC represents a level of funding that, if paid on an ongoing basis, is projected to cover normal cost each year and amortize any unfunded actuarial accrued liabilities (UAAL) (or funding excess) over a period not to exceed thirty years. The following table shows the components of the District’s annual OPEB cost for the year, the amount actually contributed to the Plan, and changes in the District’s net OPEB obligation to the Plan:

Annual required contribution	\$ 537,788
Interest on net OPEB obligation	4,865
Adjustment to annual required contribution	(7,033)
Annual OPEB cost (expense)	<u>535,620</u>
Contributions made	<u>(613,724)</u>
Increase (decrease) in net OPEB obligation	(78,104)
Net OPEB obligation, beginning of the year	121,623
Net OPEB obligation, end of the year	<u>\$ 43,519</u>

The annual OPEB cost, the percentage of annual OPEB cost contributed to the Plan, and the net OPEB obligation for the year ended June 30, 2015 and the preceding two years were as follows:

Year Ended June 30,	Annual OPEB Cost	Percentage Contributed	Net OPEB Obligation
2015	\$ 535,620	115%	\$ 43,519
2014	\$ 620,424	92%	\$ 121,623
2013	\$ 621,188	92%	\$ 73,495

D. Funded Status and Funding Progress

The funded status of the plan as of the most recent actuarial evaluation consists of the following:

Actuarial Valuation Date	Actuarial Valuation of Assets	Actuarial Accrued Liability (AAL)	Unfunded AAL (UAAL)	Funded Ratio	Covered Payroll	UAAL as a Percentage of Covered Payroll
July 1, 2014	\$ -	\$ 6,824,685	\$ 6,824,685	0%	\$ 7,288,468	94%

WILLOWS UNIFIED SCHOOL DISTRICT
 NOTES TO FINANCIAL STATEMENTS, *continued*
 JUNE 30, 2015

NOTE 10 – POSTEMPLOYMENT BENEFITS OTHER THAN PENSIONS (OPEB) (*continued*)

D. Funded Status and Funding Progress (*continued*)

Actuarial valuations of an ongoing plan involve estimates of the value of reported amounts and assumptions about the probability of occurrence of events far into the future. Examples include assumptions about future employment, investment returns, mortality, and the healthcare cost trend. Amounts determined regarding the funded status of the Plan and the annual required contributions of the employer are subject to continual revision as actual results are compared with past expectations and new estimates are made about the future.

The schedule of funding progress, presented as required supplementary information following the notes to financial statements, presents multiyear trend information about whether the actuarial value of plan assets is increasing or decreasing over time relative to the actuarial accrued liabilities for benefits.

E. Actuarial Methods and Assumptions

Projections of benefits for financial reporting purposes are based on the substantive plan (the plan as understood by the employer and the plan members) and include the types of benefits provided at the time of each valuation and the historical pattern of sharing of benefit costs between the employer and plan members to that point. The actuarial methods and assumptions used include techniques that are designed to reduce the effects of short-term volatility in actuarial accrued liabilities and the actuarial value of assets, consistent with the long-term perspective of the calculations.

Additional information as of the latest actuarial valuation follows:

Valuation Date	7/1/2014
Actuarial Cost Method	Projected Unit Credit
Amortization Method	30-year level dollar, open
Actuarial Assumptions:	
Investment rate of return	4.0%
Discount rate	4.0%
Health care trend rate	8.0%
Inflation rate	4.0%

NOTE 11 – PENSION PLANS

Qualified employees are covered under multiple-employer contributory retirement plans maintained by agencies of the State of California. Certificated employees are members of the California State Teachers' Retirement System (CalSTRS), and classified employees are members of the California Public Employees' Retirement System (CalPERS). The District recognized \$746,036 for their proportionate share of pension expense for the year ended June 30, 2015.

California State Teachers' Retirement System (CalSTRS)

Plan Description

The District contributes to the California State Teachers' Retirement System (CalSTRS); a cost-sharing multiple employer public employee retirement system defined benefit pension plan administered by CalSTRS. The plan provides retirement and disability benefits and survivor benefits to beneficiaries. Benefit provisions are established by state statutes, as legislatively amended, within the State Teachers' Retirement Law. CalSTRS issues a separate comprehensive annual financial report that includes financial statements and required supplementary information. Copies of the CalSTRS annual financial report may be obtained from CalSTRS, 7919 Folsom Blvd., Sacramento, CA 95826.

Benefits provided

The CalSTRS defined benefit plan has two benefit formulas:

CalSTRS 2% at 60: Members first hired on or before December 31, 2012, to perform service that could be creditable to CalSTRS

CalSTRS 2% at 62: Members first hired on or after January 1, 2013, to perform service that could be creditable to CalSTRS

CalSTRS 2% at 60

CalSTRS 2% at 60 members are eligible for normal retirement at age 60, with a minimum of five years of credited service. The normal retirement benefit is equal to 2.0 percent of final compensation for each year of credited service. Early retirement options are available at age 55 with five years of credited service or as early as age 50 with 30 years of credited service. The age factor for retirements after age 60 increases with each quarter year of age to 2.4 percent at age 63 or older. Members who have 30 years or more of credited service receive an additional increase of up to 0.2 percent to the age factor, known as the career factor. The maximum benefit with the career factor is 2.4 percent of final compensation.

CalSTRS 2% at 62

CalSTRS 2% at 62 members are eligible for normal retirement at age 62, with a minimum of five years of credited service. The normal retirement benefit is equal to 2.0 percent of final compensation for each year of credited service. An early retirement option is available at age 55. The age factor for retirement after age 62 increases with each quarter year of age to 2.4 percent at age 65 or older.

WILLOWS UNIFIED SCHOOL DISTRICT
NOTES TO FINANCIAL STATEMENTS, continued
JUNE 30, 2015

NOTE 11 – PENSION PLANS (continued)

California State Teachers’ Retirement System (CalSTRS) (continued)

Contributions

Active plan members are required to contribute 8.15% of their salary for fiscal year 2015 and the District is required to contribute an actuarially determined rate. The actuarial methods and assumptions used for determining the rate are those adopted by CalSTRS Teachers' Retirement Board. The required employer contribution rate for fiscal year 2015 was 8.88% of annual payroll. The contribution requirements of the plan members are established by state statute. Contributions to the plan from the District were \$554,757 for the year ended June 30, 2015.

On-Behalf Payments

The District was the recipient of on-behalf payments made by the State of California to CalSTRS for K-12 education. These payments consist of state general fund contributions of approximately \$306,186 to CalSTRS (5.679% of 2012-13 creditable compensation subject to CalSTRS).

Pension Liabilities, Pension Expense, and Deferred Outflows of Resources and Deferred Inflows of Resources Related to Pensions

At June 30, 2015, the District reported a liability for its proportionate share of the net pension liability that reflected a reduction for State pension support provided to the District. The amount recognized by the District as its proportionate share of the net pension liability, the related State support, and the total portion of the net pension liability that was associated with the District were as follows:

District's proportionate share of the net pension liability	\$	7,187,076
States's proportionate share of the net pension liability associated with the District		4,339,866
Total	\$	<u>11,526,942</u>

The net pension liability was measured as of June 30, 2014, and the total pension liability used to calculate the net pension liability was determined by applying update procedures to an actuarial valuation as of June 30, 2013, and rolling forward the total pension liability to June 30, 2014. The District’s proportion of the net pension liability was based on a projection of the District’s long-term share of contributions to the pension plan relative to the projected contributions of all participating school districts, actuarially determined. At June 30, 2014, the District’s proportion was 0.012 percent, which did not change from its proportion measured as of June 30, 2013.

WILLOWS UNIFIED SCHOOL DISTRICT
NOTES TO FINANCIAL STATEMENTS, continued
JUNE 30, 2015

NOTE 11 – PENSION PLANS (continued)

California State Teachers’ Retirement System (CalSTRS) (continued)

Pension Liabilities, Pension Expense, and Deferred Outflows of Resources and Deferred Inflows of Resources Related to Pensions (continued)

For the year ended June 30, 2015, the District recognized pension expense of \$620,432. In addition, the District recognized pension expense and revenue of \$374,647 for support provided by the State. At June 30, 2015, the District reported deferred outflows of resources and deferred inflows of resources related to pensions from the following sources:

	<u>Deferred Outflows of Resources</u>	<u>Deferred Inflows of Resources</u>
Differences between projected and actual earnings on plan investments	\$ -	\$ 1,769,804
District contributions subsequent to the measurement date	554,757	-
	<u>\$ 554,757</u>	<u>\$ 1,769,804</u>

\$554,757 reported as deferred outflows of resources related to pensions resulting from District contributions subsequent to the measurement date will be recognized as a reduction of the net pension liability in the year ended June 30, 2016. Other amounts reported as deferred outflows of resources and deferred inflows of resources related to pensions will be recognized in pension expense as follows:

<u>Year Ended June 30,</u>	<u>Deferred Inflows of Resources</u>
2016	\$ 442,451
2017	442,451
2018	442,451
2019	442,451
	<u>\$ 1,769,804</u>

Actuarial assumptions

The total pension liability was determined by applying update procedures to an actuarial valuation as of June 30, 2013, and rolling forward the total pension liability to June 30, 2014 using the following actuarial assumptions, applied to all periods included in the measurement:

Consumer Price Inflation	3.00%
Investment Yield (Net of Expenses)	7.50%
Wage Inflation	3.75%
Interest on Member Accounts	4.50%

WILLOWS UNIFIED SCHOOL DISTRICT
NOTES TO FINANCIAL STATEMENTS, continued
JUNE 30, 2015

NOTE 11 – PENSION PLANS (continued)

California State Teachers’ Retirement System (CalSTRS) (continued)

Actuarial assumptions (continued)

CalSTRS uses custom mortality tables to best fit the patterns of mortality among its members. These custom tables are based on RP2000 series tables adjusted to fit CalSTRS experience.

The actuarial assumptions used in the June 30, 2013 valuation were based on the results of an actuarial experience study for the period July 1, 2006–June 30, 2010.

The long-term expected rate of return on pension plan investments was determined using a building-block method in which best-estimate ranges of expected future real rates of return (expected returns, net of pension plan investment expense and inflation) are developed for each major asset class. The best-estimate ranges were developed using capital market assumptions from CalSTRS general investment consultant (Pension Consulting Alliance - PCA) as an input to the process. Based on the model from CalSTRS consulting actuary’s (Milliman) investment practice, a best estimate range was determined by assuming the portfolio is re-balanced annually and that annual returns are lognormally distributed and independent from year to year to develop expected percentiles for the long-term distribution of annualized returns. The assumed asset allocation by PCA is based on board policy for target asset allocation in effect on February 2, 2012, the date the current experience study was approved by the board. Best estimates of 10-year geometric real rates of return and the assumed asset allocation for each major asset class used as input to develop the actuarial investment rate of return are summarized in the following table:

Asset Class	Assumed Asset Allocation	Long-Term* Expected Real Rate of Return
Global Equity	47%	4.50%
Private Equity	12%	6.20%
Real Estate	15%	4.35%
Inflation Sensitive	5%	3.20%
Fixed Income	20%	0.20%
Cash/Liquidity	1%	0.00%
	100%	

* 10-year geometric average

Discount rate

The discount rate used to measure the total pension liability was 7.60 percent. The projection of cash flows used to determine the discount rate assumed that contributions from plan members and employers will be made at statutory contribution rates in accordance with the rate increases per AB 1469. Projected inflows from investment earnings were calculated using the long-term assumed investment rate of return (7.60 percent) and assuming that contributions, benefit payments, and administrative expense occur midyear. Based on those assumptions, the Plan’s fiduciary net position was projected to be available to make all projected future benefit payments to current plan members. Therefore, the long-term assumed investment rate of return was applied to all periods of projected benefit payments to determine the total pension liability.

WILLOWS UNIFIED SCHOOL DISTRICT
 NOTES TO FINANCIAL STATEMENTS, continued
 JUNE 30, 2015

NOTE 11 – PENSION PLANS (continued)

California State Teachers’ Retirement System (CalSTRS) (continued)

Sensitivity of the District’s proportionate share of the net pension liability to changes in the discount rate

The following presents the District’s proportionate share of the net pension liability calculated using the discount rate of 7.60 percent, as well as what the District’s proportionate share of the net pension liability would be if it were calculated using a discount rate that is 1-percentage-point lower (6.60 percent) or 1-percentage-point higher (8.60 percent) than the current rate:

	1% Decrease (6.60%)	Current Discount Rate (7.60%)	1% Increase (8.60%)
District's proportionate share of the net pension liability	\$ 11,202,771	\$ 7,187,076	\$ 3,838,715

Pension plan fiduciary net position

Detailed information about the pension plan’s fiduciary net position is available in the separately issued CalSTRS financial report.

NOTE 11 – PENSION PLANS (continued)

California Public Employees’ Retirement System (CalPERS)

Plan Description

The District contributes to the School Employer Pool under the California Public Employees’ Retirement System (CalPERS); a cost-sharing multiple-employer public employee retirement system defined benefit pension plan administered by CalPERS. The plan provides retirement and disability benefits, annual cost-of-living adjustments, and death benefits to plan members and beneficiaries. Benefit provisions are established by state statutes, as legislatively amended, within the Public Employees’ Retirement Laws. CalPERS issues a separate comprehensive annual financial report that includes financial statements and required supplementary information. Copies of the CalPERS annual financial report may be obtained from the CalPERS Executive Office, 400 P Street, Sacramento, CA 95811.

Benefits provided

The benefits for the defined benefit plan are based on members’ years of service, age, final compensation, and benefit formula. Benefits are provided for disability, death, and survivors of eligible members or beneficiaries. Members become fully vested in their retirement benefits earned to date after five years of credited service.

Contributions

Active plan members who entered into the plan prior to January 1, 2013 are required to contribute 7.0% of their salary. The California Public Employees’ Pension Reform Act (PEPRA) specifies that new members entering into the plan on or after January 1, 2013, shall pay the higher of fifty percent of normal costs or 6.0% of their salary. Additionally, for new members entering the plan on or after January 1, 2013, the employer is prohibited from paying any of the employee contribution to CalPERS unless the employer payment of the member’s contribution is specified in an employment agreement or collective bargaining agreement that expires after January 1, 2013.

The District is required to contribute an actuarially determined rate. The actuarial methods and assumptions used for determining the rate are those adopted by the CalPERS Board of Administration. The required employer contribution rate for fiscal year 2015 was 11.771% of annual payroll. Contributions to the plan from the District were \$173,627 for the year ended June 30, 2015.

Pension Liabilities, Pension Expense, and Deferred Outflows of Resources and Deferred Inflows of Resources Related to Pensions

At June 30, 2015, the District reported a liability of \$1,414,181 for its proportionate share of the net pension liability. The net pension liability was measured as of June 30, 2014, and the total pension liability used to calculate the net pension liability was determined by applying update procedures to an actuarial valuation as of June 30, 2013, and rolling forward the total pension liability to June 30, 2014. The District’s proportion of the net pension liability was based on a projection of the District’s long-term share of contributions to the pension plan relative to the projected contributions of all participating school districts, actuarially determined. At June 30, 2014, the District’s proportion was 0.012457 percent, which was a decrease of 0.000003 percent from its proportion measured as of June 30, 2013.

WILLOWS UNIFIED SCHOOL DISTRICT
 NOTES TO FINANCIAL STATEMENTS, continued
 JUNE 30, 2015

NOTE 11 – PENSION PLANS (continued)

California Public Employees’ Retirement System (CalPERS) (continued)

Pension Liabilities, Pension Expense, and Deferred Outflows of Resources and Deferred Inflows of Resources Related to Pensions (continued)

For the year ended June 30, 2015, the District recognized pension expense of \$125,604. At June 30, 2015, the District reported deferred outflows of resources and deferred inflows of resources related to pensions from the following sources:

	<u>Deferred Outflows of Resources</u>	<u>Deferred Inflows of Resources</u>
Differences between projected and actual earnings on plan investments	\$ -	\$ 485,929
Changes in proportion and differences between District contributions and proportionate share of contributions	-	353
District contributions subsequent to the measurement date	173,627	-
	<u>\$ 173,627</u>	<u>\$ 486,282</u>

\$173,627 reported as deferred outflows of resources related to pensions resulting from District contributions subsequent to the measurement date will be recognized as a reduction of the net pension liability in the year ended June 30, 2016. Other amounts reported as deferred outflows of resources and deferred inflows of resources related to pensions will be recognized in pension expense as follows:

<u>Year Ended June 30,</u>	<u>Deferred Inflows of Resources</u>
2016	\$ 121,571
2017	121,571
2018	121,571
2019	121,569
	<u>\$ 486,282</u>

Actuarial assumptions

The total pension liability was determined by applying update procedures to an actuarial valuation as of June 30, 2013, and rolling forward the total pension liability to June 30, 2014 using the following actuarial assumptions, applied to all periods included in the measurement:

Consumer Price Inflation	2.75%
Investment Yield (Net of Expenses)	7.50%
Wage Inflation	Varies by Entry Age and Service

WILLOWS UNIFIED SCHOOL DISTRICT
NOTES TO FINANCIAL STATEMENTS, continued
JUNE 30, 2015

NOTE 11 – PENSION PLANS (continued)

California Public Employees’ Retirement System (CalPERS) (continued)

Actuarial assumptions (continued)

CalPERS uses custom mortality tables to best fit the patterns of mortality among its members. These custom tables are derived using CalPERS’ membership data for all funds. The table includes 20 years of mortality improvements using Society of Actuaries Scale BB.

The actuarial assumptions used in the June 30, 2013 valuation were based on the results of an actuarial experience study for the period from 1997 to 2011.

The long-term expected rate of return on pension plan investments was determined using a building-block method in which best-estimate ranges of expected future real rates of return (expected returns, net of pension plan investment expense and inflation) are developed for each major asset class. In determining the long-term expected rate of return, both short-term and long-term market return expectations as well as the expected pension fund cash flows were taken into account. Such cash flows were developed assuming that both members and employers will make their required contributions on time and as scheduled in all future years. Using historical returns of all the funds’ asset classes, expected compound (geometric) returns were calculated over the short-term (first 10 years) and the long-term (11-60 years) using a building-block approach. Using the expected nominal returns for both short-term and long-term, the present value of benefits was calculated for each fund. The expected rate of return was set by calculating the single equivalent expected return that arrived at the same present value of benefits for cash flows as the one calculated using both short-term and long-term returns. The expected rate of return was then set equivalent to the single equivalent rate calculated above and rounded down to the nearest one quarter of one percent.

The table below reflects long-term expected real rate of return by asset class. The rate of return was calculated using the capital market assumptions applied to determine the discount rate and asset allocation. These geometric rates of return are net of administrative expenses.

<u>Asset Class</u>	<u>Assumed Asset Allocation</u>	<u>Real Return Years 1-10*</u>	<u>Real Return Years 11+**</u>
Global Equity	47%	5.25%	5.71%
Global Fixed Income	19%	0.99%	2.43%
Inflation Sensitive	6%	0.45%	3.36%
Private Equity	12%	6.83%	6.95%
Real Estate	11%	4.50%	5.13%
Infrastructure and Forestland	3%	4.50%	5.09%
Liquidity	2%	-0.55%	-1.05%
	100%		

* An expected inflation of 2.5% used for this period

** An expected inflation of 3.0% used for this period

WILLOWS UNIFIED SCHOOL DISTRICT
NOTES TO FINANCIAL STATEMENTS, continued
JUNE 30, 2015

NOTE 11 – PENSION PLANS (continued)

California Public Employees’ Retirement System (CalPERS) (continued)

Discount rate

The discount rate used to measure the total pension liability was 7.50 percent. A projection of the expected benefit payments and contributions was performed to determine if assets would run out. The test revealed the assets would not run out. Therefore the long-term expected rate of return on pension plan investments was applied to all periods of projected benefit payments to determine the total pension liability for the Schools Pool. The results of the crossover testing for the Schools Pool are presented in a detailed report that can be obtained at CalPERS’ website.

According to Paragraph 30 of Statement 68, the long-term discount rate should be determined without reduction for pension plan administrative expense. The 7.50 percent investment return assumption used in this accounting valuation is net of administrative expenses. Administrative expenses are assumed to be 15 basis points. An investment return excluding administrative expenses would have been 7.65 percent. Using this lower discount rate has resulted in a slightly higher total pension liability and net pension liability.

Sensitivity of the District’s proportionate share of the net pension liability to changes in the discount rate

The following presents the District’s proportionate share of the net pension liability calculated using the discount rate of 7.50 percent, as well as what the District’s proportionate share of the net pension liability would be if it were calculated using a discount rate that is 1-percentage-point lower (6.50 percent) or 1-percentage-point higher (8.50 percent) than the current rate:

	1% Decrease (6.50%)	Current Discount Rate (7.50%)	1% Increase (8.50%)
District's proportionate share of the net pension liability	\$ 2,480,797	\$ 1,414,181	\$ 522,916

Pension plan fiduciary net position

Detailed information about the pension plan’s fiduciary net position is available in the separately issued CalPERS financial report.

NOTE 12 – COMMITMENTS AND CONTINGENCIES

A. Grants

The District received financial assistance from federal and state agencies in the form of grants. The disbursement of funds received under these programs generally requires compliance with terms and conditions specified in the grant agreements and are subject to audit by the grantor agencies. Any disallowed claims resulting from such audits could become a liability of the General Fund or other applicable funds. However, in the opinion of management, any such disallowed claims will not have a material adverse effect on the overall financial position of the District at June 30, 2015.

B. Litigation

The District is involved in various litigation arising from the normal course of business. In the opinion of management and legal counsel, the disposition of all litigation pending is not expected to have a material adverse effect on the overall financial position of the District at June 30, 2015.

NOTE 13 – PARTICIPATION IN JOINT POWERS AUTHORITIES

The District is a member of three joint powers authorities (JPAs). The first is the California's Valued Trust (CVT) to provide the District's health and welfare benefits, another is Golden State Risk Management Authority (GSRMA) to provide the District's property and liability coverage, and the final is the Schools Excess Liability Fund (SELF) to provide excess liability coverage. The relationship is such that the JPAs are not component units of the District for financial reporting purposes.

These entities have budgeting and financial reporting requirements independent of member units and their financial statements are not presented in these financial statements; however, fund transactions between the entities and the District are included in these financial statements. Audited financial statements are available from the respective entities.

WILLOWS UNIFIED SCHOOL DISTRICT
NOTES TO FINANCIAL STATEMENTS, continued
JUNE 30, 2015

NOTE 14 – DEFERRED OUTFLOWS/INFLOWS OF RESOURCES

Pension Plans

Pursuant to GASB Statement No. 68, *Accounting and Financial Reporting for Pensions—an amendment of GASB Statement No. 27.*, the District recognized deferred outflows and inflows of resources related to pensions in the District-wide financial statements. The District’s deferred outflows and inflows of resources related to pensions were as follows at June 30, 2015:

	Deferred outflows related to pensions	Deferred inflows related to pensions
STRS Pension	\$ 554,757	\$ 1,769,804
PERS Pension	173,627	486,282
Total	\$ 728,384	\$ 2,256,086

NOTE 15 – RESTATEMENT OF NET POSITION

The beginning net position of Governmental Activities has been restated in order to record the District’s proportionate share of net pension liability and deferred outflows of resources related to pensions in accordance with GASB Statement No. 68, *Accounting and Financial Reporting for Pensions—an amendment of GASB Statement No. 27.* The effect on beginning net position is presented as follows:

	Governmental Activities
Net Position - Beginning, as Previously Reported	\$ 7,399,606
Restatement	(10,111,306)
Net Position - Beginning, as Restated	\$ (2,711,700)

**REQUIRED SUPPLEMENTARY
INFORMATION**

**WILLOWS UNIFIED SCHOOL DISTRICT
GENERAL FUND – BUDGETARY COMPARISON SCHEDULE
FOR THE YEAR ENDED JUNE 30, 2015**

	Budgeted Amounts		Actual* (Budgetary Basis)	Variances - Final to Actual
	Original	Final		
REVENUES				
LCFF sources	\$ 10,608,119	\$ 10,624,373	\$ 10,607,958	\$ (16,415)
Federal sources	633,570	687,126	738,205	51,079
Other state sources	380,524	518,261	578,765	60,504
Other local sources	364,338	471,237	827,195	355,958
Total Revenues	11,986,551	12,300,997	12,752,123	451,126
EXPENDITURES				
Certificated salaries	5,834,109	5,849,837	6,283,039	(433,202)
Classified salaries	1,431,840	1,491,815	1,543,905	(52,090)
Employee benefits	1,937,824	1,975,931	1,908,320	67,611
Books and supplies	361,692	646,924	727,633	(80,709)
Services and other operating expenditures	955,973	1,216,974	1,004,962	212,012
Capital outlay	60,000	70,000	1,057,337	(987,337)
Other outgo				
Excluding transfers of indirect costs	986,480	986,480	1,025,866	(39,386)
Transfers of indirect costs	(35,837)	(35,837)	(34,365)	(1,472)
Total Expenditures	11,532,081	12,202,124	13,516,697	(1,314,573)
Excess (Deficiency) of Revenues Over Expenditures	454,470	98,873	(764,574)	(863,447)
Other Financing Sources (Uses)				
Transfers in	1,018	1,018	-	(1,018)
Transfers out	(74,647)	(74,647)	53,744	128,391
Net Financing Sources (Uses)	(73,629)	(73,629)	53,744	127,373
NET CHANGE IN FUND BALANCE	380,841	25,244	(710,830)	(736,074)
Fund Balance - Beginning	4,831,737	4,831,737	4,835,422	3,685
Fund Balance - Ending	\$ 5,212,578	\$ 4,856,981	\$ 4,124,592	\$ (732,389)

* The actual amounts reported on this schedule do not agree with the amounts reported on the Statement of Revenues, Expenditures, and Changes in Fund Balance because, on behalf payments of \$306,186 are not included in the actual revenues and expenditures reported in this schedule.

**WILLOWS UNIFIED SCHOOL DISTRICT
SCHEDULE OF FUNDING PROGRESS
FOR THE YEAR ENDED JUNE 30, 2015**

Actuarial Valuation Date	Actuarial Valuation of Assets	Actuarial Accrued Liability (AAL)	Unfunded AAL (UAAL)	Funded Ratio	Covered Payroll	UAAAL as a Percentage of Covered Payroll
July 1, 2014	\$ -	\$ 6,824,685	\$ 6,824,685	0%	\$ 7,288,468	94%
July 1, 2011	\$ -	\$ 7,109,278	\$ 7,109,278	0%	\$ 7,056,519	101%
January 1, 2009	\$ -	\$ 7,640,500	\$ 7,640,500	0%	\$ 10,292,300	74%

See accompanying note to required supplementary information.

WILLOWS UNIFIED SCHOOL DISTRICT
SCHEDULE OF THE DISTRICT'S PROPORTIONATE SHARE OF THE NET PENSION LIABILITY -
CALSTRS
FOR THE YEAR ENDED JUNE 30, 2015

	<u>June 30, 2015</u>
District's proportion of the net pension liability	0.012%
District's proportionate share of the net pension liability	\$ 7,187,076
States's proportionate share of the net pension liability associated with the District	4,339,866
Total	<u>\$ 11,526,942</u>
District's covered-employee payroll	\$ 5,810,473
District's proportionate share of the net pension liability as a percentage of its covered-employee payroll	123.7%
Plan fiduciary net position as a percentage of the total pension liability.	76.5%

See accompanying note to required supplementary information.

**WILLOWS UNIFIED SCHOOL DISTRICT
 SCHEDULE OF THE DISTRICT'S PROPORTIONATE SHARE OF THE NET PENSION LIABILITY -
 CALPERS
 FOR THE YEAR ENDED JUNE 30, 2015**

	<u>June 30, 2015</u>
District's proportion of the net pension liability	0.012%
District's proportionate share of the net pension liability	\$ 1,414,181
District's covered-employee payroll	\$ 1,477,995
District's proportionate share of the net pension liability as a percentage of its covered-employee payroll	95.7%
Plan fiduciary net position as a percentage of the total pension liability.	83.4%

See accompanying note to required supplementary information.

**WILLOWS UNIFIED SCHOOL DISTRICT
SCHEDULE OF DISTRICT CONTRIBUTIONS - CALSTRS
FOR THE YEAR ENDED JUNE 30, 2015**

	<u>June 30, 2015</u>
Contractually required contribution	\$ 554,757
Contributions in relation to the contractually required contribution*	(554,757)
Contribution deficiency (excess)	<u>\$ -</u>
District's covered-employee payroll	\$ 5,810,473
Contributions as a percentage of covered-employee payroll	9.55%

*Amounts do not include on behalf contributions

**WILLOWS UNIFIED SCHOOL DISTRICT
SCHEDULE OF DISTRICT CONTRIBUTIONS - CALPERS
FOR THE YEAR ENDED JUNE 30, 2015**

	<u>June 30, 2015</u>
Contractually required contribution	\$ 173,627
Contributions in relation to the contractually required contribution	(173,627)
Contribution deficiency (excess)	<u>\$ -</u>
District's covered-employee payroll	\$ 1,477,995
Contributions as a percentage of covered-employee payroll	11.75%

See accompanying note to required supplementary information.

**WILLOWS UNIFIED SCHOOL DISTRICT
NOTES TO REQUIRED SUPPLEMENTARY INFORMATION
FOR THE YEAR ENDED JUNE 30, 2015**

NOTE 1 – PURPOSE OF SCHEDULES

Budgetary Comparison Schedule

This schedule is required by GASB Statement No. 34 as required supplementary information (RSI) for the General Fund and for each major special revenue fund that has a legally adopted annual budget. The budgetary comparison schedule presents both (a) the original and (b) the final appropriated budgets for the reporting period as well as (c) actual inflows, outflows, and balances, stated on the District's budgetary basis. A separate column to report the variance between the final budget and actual amounts is also presented, although not required.

Schedule of Funding Progress

This schedule is required by GASB Statement No. 45 for all sole and agent employers that provide other postemployment benefits (OPEB). The schedule presents, for the most recent actuarial valuation and the two preceding valuations, information about the funding progress of the plan, including, for each valuation, the actuarial valuation date, the actuarial value of assets, the actuarial accrued liability, the total unfunded actuarial liability (or funding excess), the actuarial value of assets as a percentage of the actuarial accrued liability (funded ratio), the annual covered payroll, and the ratio of the total unfunded actuarial liability (or funding excess) to annual covered payroll.

Schedule of the District's Proportionate Share of the Net Pension Liability

This 10-year schedule is required by GASB Statement No. 68 for each cost-sharing pension plan. Until a full 10-year trend is compiled, the schedule will only show those years under which GASB Statement No. 68 was applicable. The schedule presents the District's proportion (percentage) of the collective net pension liability, the District's proportionate share (amount) of the collective net pension liability, the District's covered-employee payroll, the District's proportionate share (amount) of the collective net pension liability as a percentage of the employer's covered-employee payroll, and the pension plan's fiduciary net position as a percentage of the total pension liability.

Schedule of District Contributions

This 10-year schedule is required by GASB Statement No. 68 for each cost-sharing pension plan. Until a full 10-year trend is compiled, the schedule will only show those years under which GASB Statement No. 68 was applicable. The schedule presents the District's statutorily or contractually required employer contribution, the amount of contributions recognized by the pension plan in relation to the statutorily or contractually required employer contribution, the difference between the statutorily or contractually required employer contribution and the amount of contributions recognized by the pension plan in relation to the statutorily or contractually required employer contribution, the District's covered-employee payroll, and the amount of contributions recognized by the pension plan in relation to the statutorily or contractually required employer contribution as a percentage of the District's covered-employee payroll.

WILLOWS UNIFIED SCHOOL DISTRICT
NOTES TO REQUIRED SUPPLEMENTARY INFORMATION, continued
FOR THE YEAR ENDED JUNE 30, 2015

NOTE 2 – EXCESS OF EXPENDITURES OVER APPROPRIATIONS

For the year ended June 30, 2015, the District incurred excesses of expenditures over appropriations in individual major funds presented in the Budgetary Comparison Schedule by major object code as follows:

	Expenditures and Other Uses		
	Budget	Actual	Excess
General Fund			
Certificated salaries	\$ 5,849,837	\$ 6,283,039	\$ 433,202
Classified salaries	\$ 1,491,815	\$ 1,543,905	\$ 52,090
Books and supplies	\$ 646,924	\$ 727,633	\$ 80,709
Capital outlay	\$ 70,000	\$ 1,057,337	\$ 987,337
Other outgo			
Excluding transfers of indirect costs	\$ 986,480	\$ 1,025,866	\$ 39,386
Transfers of indirect costs	\$ (35,837)	\$ (34,365)	\$ 1,472

**SUPPLEMENTARY
INFORMATION**

**WILLOWS UNIFIED SCHOOL DISTRICT
SCHEDULE OF EXPENDITURES OF FEDERAL AWARDS
FOR THE YEAR ENDED JUNE 30, 2015**

<u>Federal Grantor/Pass-Through Grantor/Program or Cluster</u>	<u>CFDA Number</u>	<u>Pass-Through Entity Identifying Number</u>	<u>Federal Expenditures</u>
U. S. DEPARTMENT OF EDUCATION:			
<i>Passed through California Department of Education:</i>			
Title I, Part A, Basic Grants Low-Income and Neglected	84.010	14329	\$ 474,049
Title II, Part A, Teacher Quality	84.367	14341	135,890
Title III, Limited English Proficient (LEP) Student Program	84.365	14346	28,265
Title VI, Part B, Rural & Low Income School Program	84.358	14356	38,274
Total U. S. Department of Education			<u>676,478</u>
U. S. DEPARTMENT OF AGRICULTURE:			
<i>Passed through California Department of Education:</i>			
Child Nutrition Cluster			
Especially Needy Breakfast Program	10.553	13526	118,785
National School Lunch Program	10.555	13391	363,410
Meal Supplements	10.555	*	13,518
USDA Commodities	10.555	*	32,332
Subtotal Child Nutrition Cluster			<u>528,045</u>
Child Nutrition Equipment Assistance Grants	10.579	14906	20,000
Forest Reserve Funds	10.665	10044	11,858
Total U. S. Department of Agriculture			<u>559,903</u>
U. S. DEPARTMENT OF HEALTH AND HUMAN SERVICES:			
<i>Passed through California Department of Health Services:</i>			
Medi-Cal Billing Option	93.778	10013	1,428
Total U. S. Department of Health & Human Services			<u>1,428</u>
U. S. DEPARTMENT OF THE INTERIOR:			
<i>Passed through Glenn County Office of Education:</i>			
Payments in Lieu of Taxes - Fish & Wildlife	15.226	*	49,648
Total U.S. Department of the Interior			<u>49,648</u>
Total Federal Expenditures			<u>\$ 1,287,457</u>

* - Pass-Through Entity Identifying Number not available or not applicable

**WILLOWS UNIFIED SCHOOL DISTRICT
 SCHEDULE OF AVERAGE DAILY ATTENDANCE (ADA)
 FOR THE YEAR ENDED JUNE 30, 2015**

	Second Period Report	Annual Report
SCHOOL DISTRICT		
TK/K through Third		
Regular ADA	400.07	398.78
Fourth through Sixth		
Regular ADA	313.34	311.32
Seventh through Eighth		
Regular ADA	228.93	227.77
Ninth through Twelfth		
Regular ADA	427.97	421.35
TOTAL SCHOOL DISTRICT	1,370.31	1,359.22

**WILLOWS UNIFIED SCHOOL DISTRICT
SCHEDULE OF INSTRUCTIONAL TIME
FOR THE YEAR ENDED JUNE 30, 2015**

Grade Level	Minutes Requirement	Minutes Requirement Reduced	2014-15 Actual Minutes	Number of Days	Status
Kindergarten	36,000	35,000	50,745	180	Complied
Grade 1	50,400	49,000	51,765	180	Complied
Grade 2	50,400	49,000	51,765	180	Complied
Grade 3	50,400	49,000	53,610	180	Complied
Grade 4	54,000	52,500	56,100	180	Complied
Grade 5	54,000	52,500	56,100	180	Complied
Grade 6	54,000	52,500	60,640	180	Complied
Grade 7	54,000	52,500	60,640	180	Complied
Grade 8	54,000	52,500	60,640	180	Complied
Grade 9	64,800	63,000	65,800	180	Complied
Grade 10	64,800	63,000	65,800	180	Complied
Grade 11	64,800	63,000	65,800	180	Complied
Grade 12	64,800	63,000	65,800	180	Complied

See accompanying note to supplementary information.

**WILLOWS UNIFIED SCHOOL DISTRICT
SCHEDULE OF FINANCIAL TRENDS AND ANALYSIS
FOR THE YEAR ENDED JUNE 30, 2015**

	2016 (Budget)	2015	2014	2013
General Fund - Budgetary Basis**				
Revenues And Other Financing Sources	\$ 14,358,801	\$ 12,752,123	\$ 11,886,224	\$ 11,144,229
Expenditures And Other Financing Uses	13,189,809	13,462,953	11,441,891	11,044,616
Net change in Fund Balance	\$ 1,168,992	\$ (710,830)	\$ 444,333	\$ 99,613
Ending Fund Balance	\$ 5,293,584	\$ 4,124,592	\$ 4,835,422	\$ 3,743,442
Available Reserves*	\$ 958,368	\$ 1,372,385	\$ 3,339,567	\$ 696,911
Available Reserves As A Percentage Of Outgo	7.27%	10.19%	29.19%	6.31%
Long-term Debt	\$ 12,684,980	\$ 12,689,980	\$ 4,168,029	\$ 359,981
Average Daily Attendance At P-2	1,370	1,370	1,372	1,379

The General Fund balance has increased by \$381,150 over the past two years. The fiscal year 2015-16 budget projects a further increase of \$1,168,992. For a District this size, the State recommends available reserves of at least three percent of General Fund expenditures, transfers out, and other uses (total outgo).

The District has incurred operating surpluses in two of the past three years and anticipates incurring an operating surplus during the 2015-16 fiscal year. Total long term obligations have increased by \$12,329,999 over the past two years.

Average daily attendance has decreased by 9 ADA over the past two years. No change in ADA is anticipated during the 2015-16 fiscal year.

*Available reserves consist of all unassigned fund balance within the General Fund.

**The actual amounts reported on this schedule do not agree with the amounts reported on the Statement of Revenues, Expenditures, and Changes in Fund Balance because, on behalf payments of \$306,186 are not included in the actual revenues and expenditures reported in this schedule.

**WILLOWS UNIFIED SCHOOL DISTRICT
RECONCILIATION OF ANNUAL FINANCIAL AND BUDGET REPORT WITH AUDITED
FINANCIAL STATEMENTS
FOR THE YEAR ENDED JUNE 30, 2015**

There were no items requiring reconciliation between the annual financial and budget report and the audited financial statements for the year ended June 30, 2015.

WILLOWS UNIFIED SCHOOL DISTRICT
 COMBINING BALANCE SHEET
 JUNE 30, 2015

	Cafeteria Fund	Capital Facilities Fund	Non-Major Governmental Funds
ASSETS			
Cash and cash equivalents	\$ -	\$ 328,477	\$ 328,477
Accounts receivable	124,069	379	124,448
Stores inventory	3,217	-	3,217
Total Assets	\$ 127,286	\$ 328,856	\$ 456,142
LIABILITIES			
Deficit cash	\$ 13,312	\$ -	\$ 13,312
Accrued liabilities	15,746	-	15,746
Due to other funds	34,365	-	34,365
Total Liabilities	63,423	-	63,423
FUND BALANCES			
Non-spendable	3,217	-	3,217
Restricted	60,646	328,856	389,502
Total Fund Balances	63,863	328,856	392,719
Total Liabilities and Fund Balance	\$ 127,286	\$ 328,856	\$ 456,142

See accompanying note to supplementary information.

**WILLOWS UNIFIED SCHOOL DISTRICT
 COMBINING STATEMENT OF REVENUES, EXPENDITURES, AND CHANGES IN FUND
 BALANCES
 FOR THE YEAR ENDED JUNE 30, 2015**

	Cafeteria Fund	Capital Facilities Fund	Non-Major Governmental Funds
REVENUES			
Federal sources	\$ 548,044	\$ -	\$ 548,044
Other state sources	41,964	-	41,964
Other local sources	123,474	9,642	133,116
Total Revenues	713,482	9,642	723,124
EXPENDITURES			
Current			
Pupil services			
Food services	711,175	-	711,175
General administration			
All other general administration	34,365	-	34,365
Plant services	2,386	-	2,386
Facilities acquisition and maintenance	-	475	475
Total Expenditures	747,926	475	748,401
Excess (Deficiency) of Revenues Over Expenditures	(34,444)	9,167	(25,277)
Other Financing Sources (Uses)			
Transfers out	(53,744)	-	(53,744)
Net Financing Sources (Uses)	(53,744)	-	(53,744)
NET CHANGE IN FUND BALANCE	(88,188)	9,167	(79,021)
Fund Balance - Beginning	152,051	319,689	471,740
Fund Balance - Ending	\$ 63,863	\$ 328,856	\$ 392,719

See accompanying note to supplementary information.

**WILLOWS UNIFIED SCHOOL DISTRICT
 NOTES TO SUPPLEMENTARY INFORMATION
 JUNE 30, 2015**

NOTE 1 – PURPOSE OF SCHEDULES

Schedule of Expenditures of Federal Awards

The accompanying Schedule of Expenditures of Federal Awards includes the Federal grant activity of the District and is presented on the modified accrual basis of accounting. The information in this schedule is presented in accordance with the requirements of the United States Office of Management and Budget Circular A-133, *Audits of States, Local Governments, and Non-Profit Organizations*. Therefore, some amounts presented in this schedule may differ from amounts presented in, or used in the preparation of, the financial statements.

The following schedule provides reconciliation between revenues reported on the Statement of Revenue, Expenditures, and Changes in Fund Balance, and the related expenditures reported on the Schedule of Expenditures of Federal Awards. The reconciling amounts represent Federal funds that have been recorded as revenues in a prior year that have been expended by June 30, 2015 or Federal funds that have been recorded as revenues in the current year and were not expended by June 30, 2015.

	CFDA	
	Number	Amount
Total Federal Revenues reported in the Statement of Revenues, Expenditures, and Changes in Fund Balance		\$ 1,286,249
Medi-Cal Billing Option	93.778	<u>1,208</u>
Total Expenditures reported in the Schedule of Expenditures of Federal Awards		<u>\$ 1,287,457</u>

Schedule of Average Daily Attendance (ADA)

Average daily attendance (ADA) is a measurement of the number of pupils attending classes of the District. The purpose of attendance accounting from a fiscal standpoint is to provide the basis on which apportionments of state funds are made to school districts. This schedule provides information regarding the attendance of students at various grade levels and in different programs.

Schedule of Instructional Time

This schedule presents information on the amount of instructional time offered by the District and whether the District complied with the provisions of *Education Code Sections 46200 through 46208*. During the year ended June 30, 2015, the District participated in the Longer Day incentive funding program. As of June 30, 2015, the District had not yet met its target funding. Through 2014-15, the instructional day and minute requirements have been reduced pursuant to *Education Code Section 46201.2*.

WILLOWS UNIFIED SCHOOL DISTRICT
NOTES TO SUPPLEMENTARY INFORMATION, continued
JUNE 30, 2015

NOTE 1 – PURPOSE OF SCHEDULES (continued)

Schedule of Financial Trends and Analysis

This schedule discloses the District's financial trends by displaying past years' data along with current year budget information. These financial trend disclosures are used to evaluate the District's ability to continue as a going concern for a reasonable period of time.

Reconciliation of Annual Financial and Budget Report with Audited Financial Statements

This schedule provides the information necessary to reconcile the fund balance of all funds reported on the Annual Financial and Budget Report Unaudited Actuals to the audited financial statements.

Combining Statements – Non-Major Funds

These statements provide information on the District's non-major funds.

Local Education Agency Organization Structure

This schedule provides information about the District's boundaries and schools operated, members of the governing board, and members of the administration. (Located in the front of the audit report)

**OTHER INDEPENDENT
AUDITORS' REPORTS**

**REPORT ON INTERNAL CONTROL OVER FINANCIAL REPORTING AND ON
COMPLIANCE AND OTHER MATTERS BASED ON AN AUDIT OF FINANCIAL
STATEMENTS PERFORMED IN ACCORDANCE WITH
GOVERNMENT AUDITING STANDARDS**

Christy White, CPA

Michael Ash, CPA

Heather Rubio

Independent Auditors' Report

Governing Board
Willows Unified School District
Willows, California

We have audited, in accordance with the auditing standards generally accepted in the United States of America and the standards applicable to financial audits contained in *Government Auditing Standards* issued by the Comptroller General of the United States, the financial statements of the governmental activities, the major fund, and the aggregate remaining fund information of Willows Unified School District, as of and for the year ended June 30, 2015, and the related notes to the financial statements, which collectively comprise the Willows Unified School District's basic financial statements, and have issued our report thereon dated December 14, 2015.

Internal Control over Financial Reporting

In planning and performing our audit of the financial statements, we considered Willows Unified School District's internal control over financial reporting (internal control) to determine the audit procedures that are appropriate in the circumstances for the purpose of expressing our opinions on the financial statements, but not for the purpose of expressing an opinion on the effectiveness of Willows Unified School District's internal control. Accordingly, we do not express an opinion on the effectiveness of Willows Unified School District's internal control.

A deficiency in internal control exists when the design or operation of a control does not allow management or employees, in the normal course of performing their assigned functions, to prevent, or detect and correct, misstatements on a timely basis. A *material weakness* is a deficiency, or a combination of deficiencies, in internal control, such that there is a reasonable possibility that a material misstatement of the entity's financial statements will not be prevented, or detected and corrected on a timely basis. A *significant deficiency* is a deficiency, or a combination of deficiencies, in internal control that is less severe than a material weakness, yet important enough to merit attention by those charged with governance.

SAN DIEGO
LOS ANGELES
SAN FRANCISCO/BAY AREA

Corporate Office:
348 Olive Street
San Diego, CA 92103

toll-free: 877.220.7229
tel: 619.270.8222
fax: 619.260.9085
www.christywhite.com

*Licensed by the California
State Board of Accountancy*

Our consideration of internal control was for the limited purpose described in the first paragraph of this section and was not designed to identify all deficiencies in internal control that might be material weaknesses or significant deficiencies. Given these limitations, during our audit we did not identify any deficiencies in internal control that we consider to be material weaknesses. However, material weaknesses may exist that have not been identified.

Compliance and Other Matters

As part of obtaining reasonable assurance about whether Willows Unified School District's financial statements are free of material misstatement, we performed tests of its compliance with certain provisions of laws, regulations, contracts, and grant agreements, noncompliance with which could have a direct and material effect on the determination of financial statement amounts. However, providing an opinion on compliance with those provisions was not an objective of our audit, and accordingly, we do not express such an opinion. The results of our tests disclosed no instances of noncompliance or other matters that are required to be reported under *Government Auditing Standards*.

Purpose of this Report

The purpose of this report is solely to describe the scope of our testing of internal control and compliance and the results of that testing, and not to provide an opinion on the effectiveness of the entity's internal control or on compliance. This report is an integral part of an audit performed in accordance with *Government Auditing Standards* in considering the entity's internal control and compliance. Accordingly, this communication is not suitable for any other purpose.

A handwritten signature in cursive script that reads "Christy White Associates".

San Diego, California
December 14, 2015

**REPORT ON COMPLIANCE FOR EACH MAJOR FEDERAL PROGRAM; AND REPORT
ON INTERNAL CONTROL OVER COMPLIANCE REQUIRED BY
OMB CIRCULAR A-133**

Christy White, CPA

Michael Ash, CPA

Heather Rubio

Independent Auditors' Report

Governing Board
Willows Unified School District
Willows, California

Report on Compliance for Each Major Federal Program

We have audited Willows Unified School District's compliance with the types of compliance requirements described in the *OMB Circular A-133 Compliance Supplement* that could have a direct and material effect on each of Willows Unified School District's major federal programs for the year ended June 30, 2015. Willows Unified School District's major federal programs are identified in the summary of auditor's results section of the accompanying schedule of findings and questioned costs.

Management's Responsibility

Management is responsible for compliance with the requirements of laws, regulations, contracts, and grants applicable to its federal programs.

Auditor's Responsibility

Our responsibility is to express an opinion on compliance for each of Willows Unified School District's major federal programs based on our audit of the types of compliance requirements referred to above. We conducted our audit of compliance in accordance with auditing standards generally accepted in the United States of America; the standards applicable to financial audits contained in *Government Auditing Standards*, issued by the Comptroller General of the United States; and OMB Circular A-133, *Audits of States, Local Governments, and Non-Profit Organizations*. Those standards and OMB Circular A-133 require that we plan and perform the audit to obtain reasonable assurance about whether noncompliance with the types of compliance requirements referred to above that could have a direct and material effect on a major federal program occurred. An audit includes examining, on a test basis, evidence about Willows Unified School District's compliance with those requirements and performing such other procedures as we considered necessary in the circumstances.

We believe that our audit provides a reasonable basis for our opinion on compliance for each major federal program. However, our audit does not provide a legal determination of Willows Unified School District's compliance.

SAN DIEGO
LOS ANGELES
SAN FRANCISCO/BAY AREA

Corporate Office:
348 Olive Street
San Diego, CA 92103

toll-free: 877.220.7229
tel: 619.270.8222
fax: 619.260.9085
www.christywhite.com

*Licensed by the California
State Board of Accountancy*

Opinion on Each Major Federal Program

In our opinion, Willows Unified School District complied, in all material respects, with the types of compliance requirements referred to above that could have a direct and material effect on each of its major federal programs for the year ended June 30, 2015.

Report on Internal Control Over Compliance

Management of Willows Unified School District is responsible for establishing and maintaining effective internal control over compliance with the types of compliance requirements referred to above. In planning and performing our audit of compliance, we considered Willows Unified School District's internal control over compliance with the types of requirements that could have a direct and material effect on each major federal program to determine the auditing procedures that are appropriate in the circumstances for the purpose of expressing an opinion on compliance for each major federal program and to test and report on internal control over compliance in accordance with OMB Circular A-133, but not for the purpose of expressing an opinion on the effectiveness of internal control over compliance. Accordingly, we do not express an opinion on the effectiveness of Willows Unified School District's internal control over compliance.

A deficiency in internal control over compliance exists when the design or operation of a control over compliance does not allow management or employees, in the normal course of performing their assigned functions, to prevent, or detect and correct, noncompliance with a type of compliance requirement of a federal program on a timely basis. *A material weakness in internal control over compliance* is a deficiency, or combination of deficiencies, in internal control over compliance, such that there is a reasonable possibility that material noncompliance with a type of compliance requirement of a federal program will not be prevented, or detected and corrected, on a timely basis. *A significant deficiency in internal control over compliance* is a deficiency, or a combination of deficiencies, in internal control over compliance with a type of compliance requirement of a federal program that is less severe than a material weakness in internal control over compliance, yet important enough to merit attention by those charged with governance.

Our consideration of internal control over compliance was for the limited purpose described in the first paragraph of this section and was not designed to identify all deficiencies in internal control over compliance that might be material weaknesses or significant deficiencies. We did not identify any deficiencies in internal control over compliance that we consider to be material weaknesses. However, material weaknesses may exist that have not been identified.

The purpose of this report on internal control over compliance is solely to describe the scope of our testing of internal control over compliance and the results of that testing based on the requirements of OMB Circular A-133. Accordingly, this report is not suitable for any other purpose.

Christy White Associates

San Diego, California
December 14, 2015

REPORT ON STATE COMPLIANCE

Independent Auditors' Report

Christy White, CPA

Michael Ash, CPA

Heather Rubio

Governing Board
Willows Unified School District
Willows, California

Report on State Compliance

We have audited Willows Unified School District's compliance with the types of compliance requirements described in the *2014-15 Guide for Annual Audits of K-12 Local Education Agencies and State Compliance Reporting*, issued by the California Education Audit Appeals Panel that could have a direct and material effect on each of Willows Unified School District's state programs for the fiscal year ended June 30, 2015, as identified below.

Management's Responsibility

Management is responsible for compliance with the requirements of laws, regulations, contracts, and grants applicable to its state programs.

Auditor's Responsibility

Our responsibility is to express an opinion on compliance for each of Willows Unified School District's state programs based on our audit of the types of compliance requirements referred to above. We conducted our audit of compliance in accordance with auditing standards generally accepted in the United States of America; the standards applicable to financial audits contained in *Government Auditing Standards*, issued by the Comptroller General of the United States; and the *2014-15 Guide for Annual Audits of K-12 Local Education Agencies and State Compliance Reporting*, issued by the California Education Audit Appeals Panel as regulations. Those standards require that we plan and perform the audit to obtain reasonable assurance about whether noncompliance with the types of compliance requirements referred to above that could have a direct and material effect on the state programs noted below occurred. An audit includes examining, on a test basis, evidence about Willows Unified School District's compliance with those requirements and performing such other procedures as we considered necessary in the circumstances.

We believe that our audit provides a reasonable basis for our opinion on compliance with the requirements referred to above. However, our audit does not provide a legal determination of Willows Unified School District's compliance with those requirements.

SAN DIEGO
LOS ANGELES
SAN FRANCISCO/BAY AREA

Corporate Office:
348 Olive Street
San Diego, CA 92103

toll-free: 877.220.7229
tel: 619.270.8222
fax: 619.260.9085
www.christywhite.com

*Licensed by the California
State Board of Accountancy*

Opinion on State Compliance

In our opinion, Willows Unified School District complied, in all material respects, with the types of compliance requirements referred to above that are applicable to the state programs noted in the table below for the year ended June 30, 2015.

Other Matters

The results of our auditing procedures disclosed instances of noncompliance, which are described in the accompanying schedule of findings and questioned costs as item #2015-1. Our opinion on state compliance is not modified with respect to these matters.

Willows Unified School District’s response to the noncompliance findings identified in our audit are described in the accompanying schedule of findings and questioned costs and corrective action plan. Willows Unified School District’s response was not subjected to the auditing procedures applied in the audit of compliance and, accordingly, we express no opinion on the response.

Procedures Performed

In connection with the audit referred to above, we selected and tested transactions and records to determine Willows Unified School District's compliance with the state laws and regulations applicable to the following items:

<u>PROGRAM NAME</u>	<u>PROCEDURES PERFORMED</u>
Attendance	Yes
Teacher Certification and Misassignments	Yes
Kindergarten Continuance	Yes
Independent Study	Yes
Continuation Education	Yes
Instructional Time for school districts	Yes
Instructional Materials, general requirements	Yes
Ratios of Administrative Employees to Teachers	Yes
Classroom Teacher Salaries	Yes
Early Retirement Incentive	Not Applicable
Gann Limit Calculation	Yes
School Accountability Report Card	Yes
Juvenile Court Schools	Not Applicable
Middle or Early College High Schools	Not Applicable
K-3 Grade Span Adjustment	Yes
Transportation Maintenance of Effort	Yes
Regional Occupation Centers or Programs Maintenance of Effort	Not Applicable
Adult Education Maintenance of Effort	Not Applicable
California Clean Energy Jobs Act	Yes

PROGRAM NAME	PROCEDURES PERFORMED
After School Education and Safety Program	Not Applicable
Proper Expenditure of Education Protection Account Funds	Yes
Common Core Implementation Funds	Yes
Unduplicated Local Control Funding Formula Pupil Counts	Yes
Local Control and Accountability Plan	Yes
Attendance; for charter schools	Not Applicable
Mode of Instruction; for charter schools	Not Applicable
Nonclassroom-Based Instruction/Independent Study; for charter schools	Not Applicable
Determination of Funding for Nonclassroom-Based Instruction; for charter schools	Not Applicable
Annual Instructional Minutes – Classroom Based; for charter schools	Not Applicable
Charter School Facility Grant Program	Not Applicable

Christy White Associates

San Diego, California
December 14, 2015

**SCHEDULE OF FINDINGS
AND QUESTIONED COSTS**

**WILLOWS UNIFIED SCHOOL DISTRICT
SUMMARY OF AUDITORS' RESULTS
FOR THE YEAR ENDED JUNE 30, 2015**

FINANCIAL STATEMENTS

Type of auditors' report issued:	<u>Unmodified</u>
Internal control over financial reporting:	
Material weakness(es) identified?	<u>No</u>
Significant deficiency(ies) identified?	<u>None Reported</u>
Non-compliance material to financial statements noted?	<u>No</u>

FEDERAL AWARDS

Internal control over major program:	
Material weakness(es) identified?	<u>No</u>
Significant deficiency(ies) identified?	<u>None Reported</u>
Type of auditors' report issued:	<u>Unmodified</u>
Any audit findings disclosed that are required to be reported in accordance with section .510(a) of OMB Circular A-133?	<u>No</u>
Identification of major programs:	

<u>CFDA Number(s)</u>	<u>Name of Federal Program of Cluster</u>	
<u>10.553, 10.555</u>	<u>Child Nutrition Cluster</u>	
Dollar threshold used to distinguish between Type A and Type B programs:	\$	<u>300,000</u>
Auditee qualified as low-risk auditee?		<u>Yes</u>

STATE AWARDS

Internal control over state programs:	
Material weaknesses identified?	<u>No</u>
Significant deficiency(ies) identified?	<u>Yes</u>
Type of auditors' report issued on compliance for state programs:	<u>Unmodified</u>

**WILLOWS UNIFIED SCHOOL DISTRICT
FINANCIAL STATEMENT FINDINGS
FOR THE YEAR ENDED JUNE 30, 2015**

FIVE DIGIT CODE

20000
30000

AB 3627 FINDING TYPE

Inventory of Equipment
Internal Control

There were no financial statement findings for the year ended June 30, 2015.

**WILLOWS UNIFIED SCHOOL DISTRICT
FEDERAL AWARD FINDINGS AND QUESTIONED COSTS
FOR THE YEAR ENDED JUNE 30, 2015**

FIVE DIGIT CODE

50000

AB 3627 FINDING TYPE

Federal Compliance

There were no federal award findings or questioned costs for the year ended June 30, 2015.

**WILLOWS UNIFIED SCHOOL DISTRICT
STATE AWARD FINDINGS AND QUESTIONED COSTS
FOR THE YEAR ENDED JUNE 30, 2015**

<u>FIVE DIGIT CODE</u>	<u>AB 3627 FINDING TYPE</u>
10000	Attendance
40000	State Compliance
42000	Charter School Facilities Programs
60000	Miscellaneous
61000	Classroom Teacher Salaries
62000	Local Control Accountability Plan
70000	Instructional Materials
71000	Teacher Misassignments
72000	School Accountability Report Card

FINDING #2015-1 – SCHOOL ACCOUNTABILITY REPORT CARDS (72000)

Criteria: School facilities conditions assessments as indicated in a school’s annual School Accountability Report Card (SARC) should match the information indicated in the Facility Inspection Tool (FIT) forms and be updated annually by the most recent FIT form, as per Education Code 3312(b)(8) and 17002.

Condition: During our testing, we found that all three school sites tested did not have FIT forms to support the information in the published SARC.

Cause: Inadequate controls over the preparation of the annual SARCs.

Effect: Information published in the SARCs does not agree to the FIT forms.

Questioned Costs: None.

Perspective: FIT forms for all three schools tested.

Recommendation: We recommend the District work to ensure that school facilities assessments are done annually and the SARCs reflect this assessment.

District Response: The District is aware that the SARCs must align with the annual Facility Inspection Tool (FIT). In the 2014-15 fiscal year, the staff inadvertently referenced the FIT forms for the 2012-13 fiscal year. The inaccuracy has been corrected in the fiscal year 2015-16 and will be correctly reflected in our February 2016 SARCs.

**WILLOWS UNIFIED SCHOOL DISTRICT
SUMMARY SCHEDULE OF PRIOR AUDIT FINDINGS
FOR THE YEAR ENDED JUNE 30, 2015**

FINDING #2014-1: BANK RECONCILIATIONS (30000)

Criteria: Internal controls over the cash receipting processes, including the bank reconciliation are essential to ensure that all monies being collected by the District are receipted, deposited, and posted to the general ledger in a timely and accurate fashion.

Condition: During our testing of the June 2014 General Fund clearing bank account, it was noted that several items related to July 2014 were included in the bank reconciliation for June creating errors in the reconciliation process.

Cause: Clerical error.

Effect: Inaccurate reconciliation of the bank account.

Perspective: Review of all June 2014 District bank reconciliations.

Recommendation: We recommend the District ensure that bank reconciliation is performed accurately each month through review by someone other than the person performing the reconciliation.

District Response: The District concurs with the audit finding.

Current Status: Implemented.